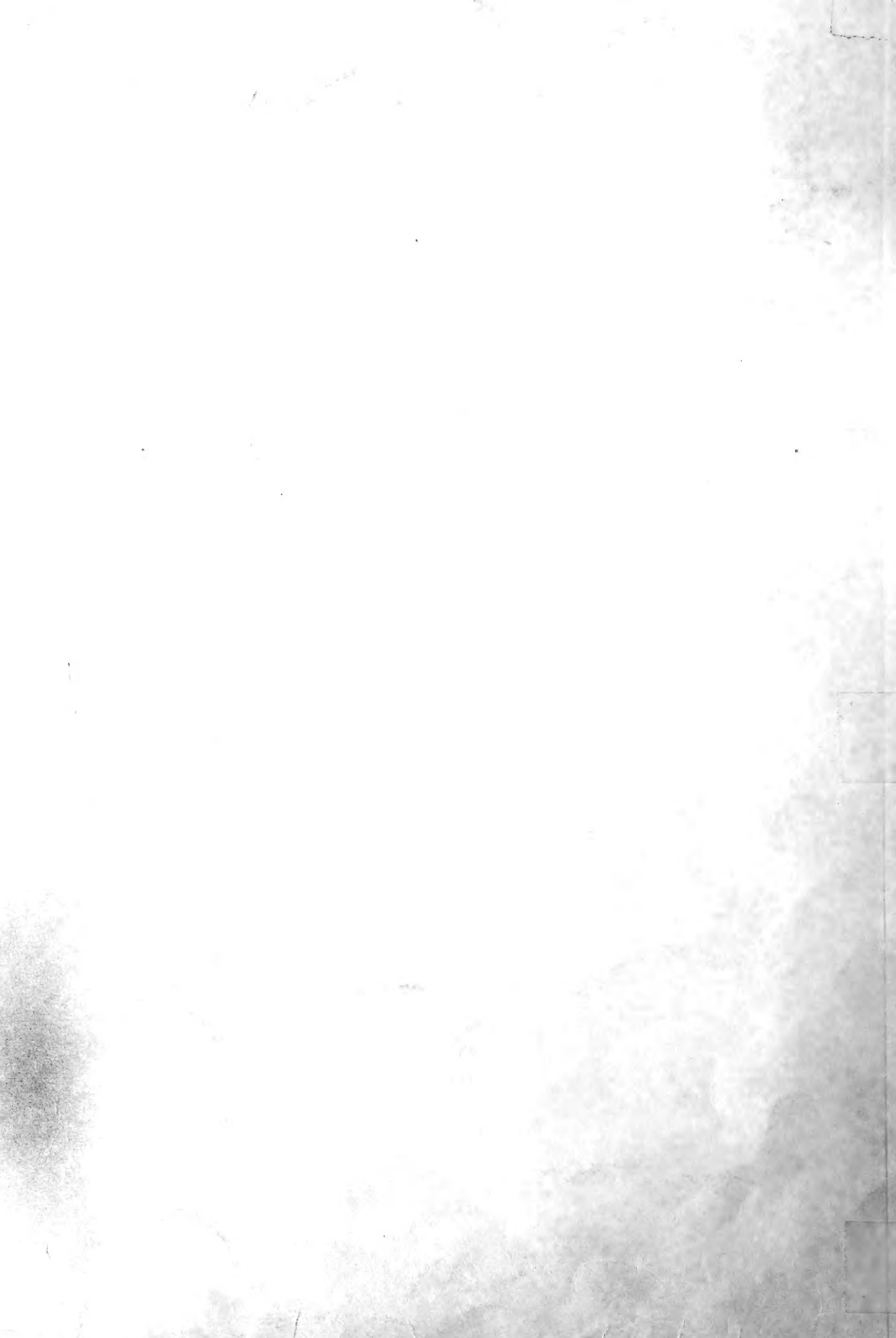


Historic, Archive Document

Do not assume content reflects current scientific knowledge, policies, or practices.



MUSSER FORESTS INC

Indiana, Pennsylvania

EVERGREEN SEEDLINGS AND TRANSPLANTS • HARDWOOD SEEDLINGS • ORNAMENTAL AND SHADE TREES
FRUIT AND FLOWERING TREES • ROSES • SHRUBS • RHODODENDRON • CHRISTMAS TREE GROWERS' GUIDE

LIBRARY
MAR 31 1952
U. S. Department of Agriculture

1952



**20 MILLION
Trees a Year!**

Musser Trees Grow!

There's a Difference!



Best
Seed
Comes
Only
From
Mature
Parent
Trees

All tree seed is not the same. If the parent tree has undesirable qualities, its seed will perpetuate those qualities. To be sure of the best obtainable seed, we have sent men all over the United States to seek out mature, hardy, disease - resistant parent trees with straight stems and foliage of rich color.

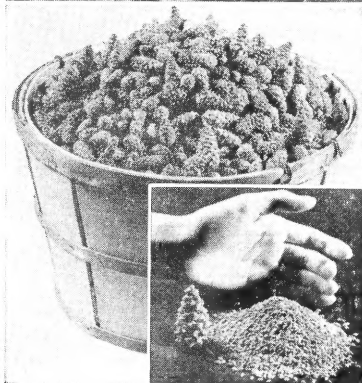
We have imported seed picked from selected stands of timber in Europe, which have been developed through generations to

bring out their desirable characteristics.

A bushel of carefully selected Scotch Pine cones may produce only a handful of seed, and germination tests necessitate further rejections.

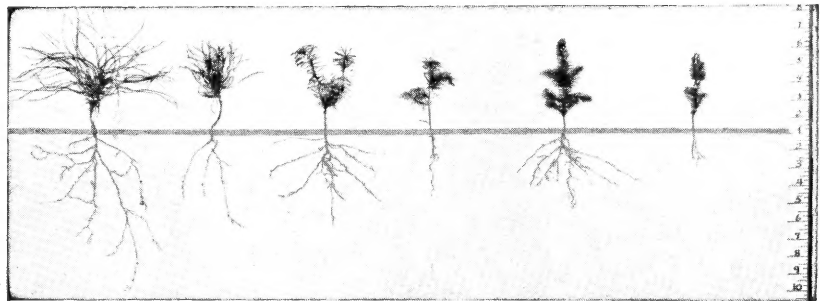
Such selectivity is costly — yes. But it is a "must" to put meaning into the phrase . . .

"Musser Trees Grow"



"Save by buying the Best"

Many
Cones —
Few
Seeds

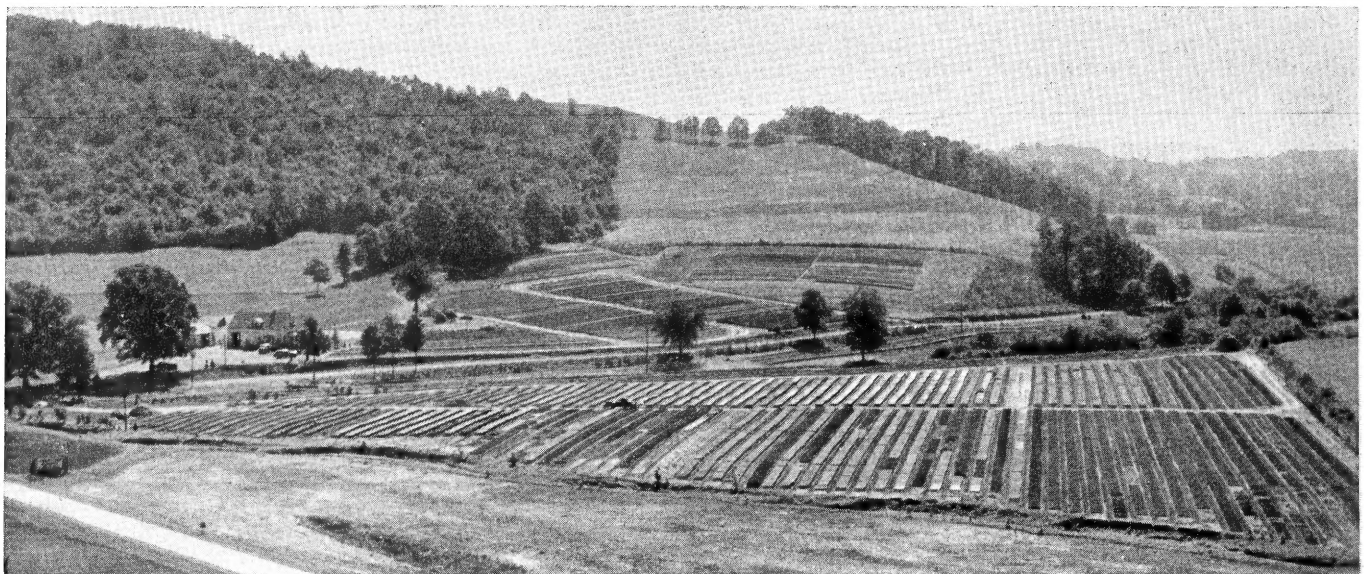


A B A B A B

These 2-year seedlings show superiority of Musser culture. Sturdy, well-rooted "A" trees are Musser stock; "B" trees come from other sources.

Three Nurseries

The original Musser Nursery, which was used for production of both Seedlings and Transplants. It is now partially devoted to the production of highest grade Ornamental Stock for wholesale. 270 acres in three nurseries are under intensive cultivation. Grow over 20,000,000 trees EACH YEAR!



Musser Root Systems

A young tree with a strong and extensively branched, but compact, root system is the tree that survives. Good hereditary characteristics through selection of seed is the basic requirement — careful handling and scientific culture in the nursery

is also essential. The many additional feeder roots in **Musser Cultured Tree Stock** enable the young tree to extract the most food from the soil of your planting site. **Musser Tree Stock is superior. It will survive where inferior planting stock will not.**



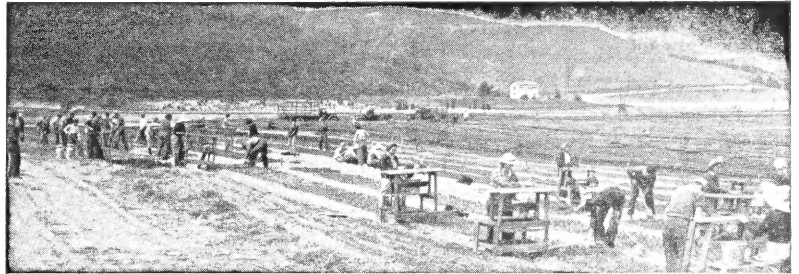
Transplanting

Stock is transplanted in our nurseries from one to four or more times. Each time, the longer, more easily damaged roots are reduced so that more small feeder roots develop near the stem. The more feeder roots, the more quickly the tree is established on your land. Also, the resulting compact mass of small

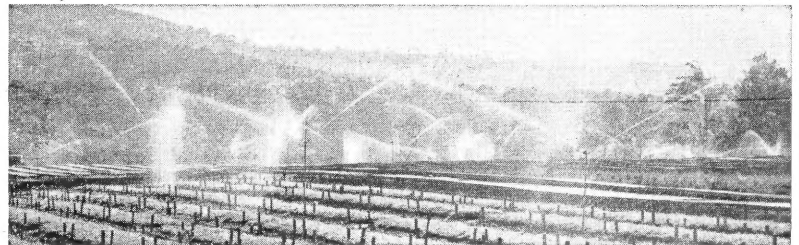
feeder roots makes the tree easier to plant.

Each year, in the spring and summer, we transplant hundreds of thousands of seedlings to build more feeder roots. Results prove extra cost is repaid many times over. Below is shown a section of transplant beds during a recent season.

Three-year Musser Hemlock Seedling. Note exceptional Root and Branch Development



Labor is the biggest cost in growing tree stock. After transplanting, seedlings must be protected against weeds that will smother them.



An extensive overhead sprinkling system assures continuous growth. A Musser tree has never been retarded by drought.



Cuttings and Grafts

BY MUSSER EXPERTS

To reproduce exact qualities desired in stock of a certain species, Musser Forests propagates by cuttings or grafts.

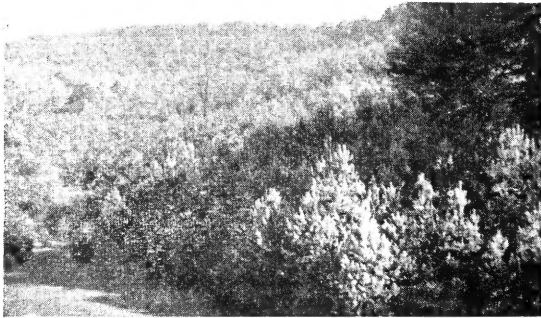
ROOTED CUTTINGS are small branches from perfect specimen trees, rooted in our greenhouses under controlled conditions of fertility, moisture and temperature. In cases where a species will not root from cuttings

GRAFTS are produced by introducing cuttings of the desired quality into hardy root stock of a related species. Grafting is a complicated cultural process covering some months.

One of our Greenhouses for propagation of Rooted Cuttings

9 Points for the Land Owner

*Idle Land . . .
Is Wasted Opportunity*



Musser Scotch Pine
Grown from SPECIAL STRAIN Seed
7 years old, ready to thin for Christmas Trees

1 — Thousands of idle acres could earn money for you by planting them with healthy, selected Musser Tree Stock.

2 — After planting, seedling or transplant trees require no cultivation or care. 85% to 95% of planted trees grow to maturity.

3 — Reforested land increases in value at the rate of at least \$10 per acre per year. Thirty-year-old pine timber is worth at least \$300 per acre (estimating only 300 trees per acre at \$1 each).

4 — Trees can be insured against fire at a nominal rate. See your Local Insurance Agent.

5 — Christmas Trees are a profitable by-product of a forest plantation. There is a rich market for Christmas Trees. See page 21.

6 — \$1000 invested to plant a 50-acre tract will be worth at least \$15,000 for timber in 25 to 30 years, plus Christmas Tree profits.

7 — There are no restrictions on the sale of trees or timber grown from Musser Stock.

8 — Reforested land is practically tax-free in many states.

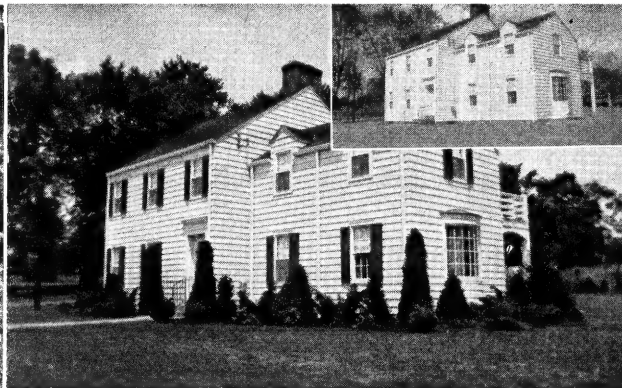
9 — Land planted with trees and insured against fire is the finest insurance policy for your estate.

It Pays to Plant Musser Trees - the Best!



JAPANESE YEWE

UPRIGHT — Deep rich green foliage. Sun or shade. Successful where many ornamentals will not grow. Beautiful natural cone shape. This yew can easily be sheared for hedges.



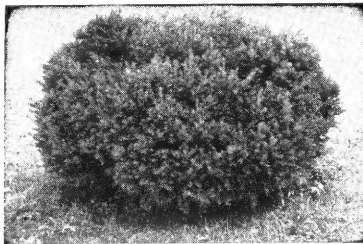
The Home Beautiful

Combine upright and spreading evergreens for warmth and color. The "before and after" photo shows the pleasant, softening effect accomplished by such planting. Many pleasing variations are possible



AMERICAN ARBORVITAE

A popular choice for home planting. May be kept pruned to any height, so it is excellent for hedges, mixed plantings, windbreaks, specimens.



JAPANESE YEWE

SPREADING — The characteristic spreading growth is superb to develop masses of velvety, dark green foliage. Sun or shade.



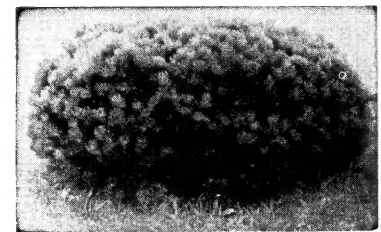
BLUE SPRUCE

The familiar always striking rich blue-green ornamental. Prefers sun. Natural cone shape.



PFITZER JUNIPER

Dwarf spreading ornamental. Requires sun. Widely used. Very hardy — withstands adverse growing conditions. Excellent in combination with tall growing species.



MUGHO PINE

Dwarf, spreading, slow growing. Hard. Avoid wet soil. Requires sunlight. Individual specimens or low, compact hedges.

See also "Hedges and Windbreaks" on page 6. Prices and sizes of above stock on pages 12, 13, 14.



American Holly

Evergreen Leaves

Red Berries

Grow the beautiful, ever-familiar American Holly yourself. Our named varieties are all propagated from the very best stock; compact, dense growing types. **HARDY**, as far north as MASSACHUSETTS, CLEVELAND, DETROIT, etc. 4 to 6 inches high, some branched. Individually potted in paper containers.

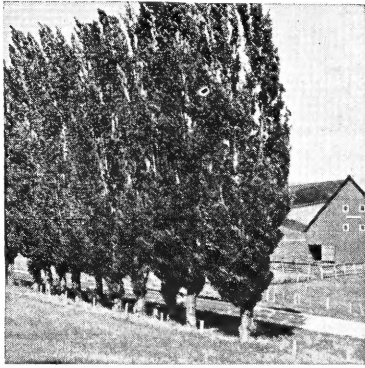
THIS OFFER GUARANTEES:

- 3 — Female Plants**
(Producing Red Berries)
- 1 — Male Plant**
(To Pollinate)

4 FOR \$6.75

POSTPAID

SHIPPED ABOUT JUNE 15



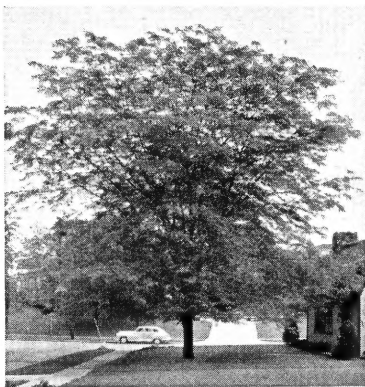
Lombardy Poplar

Will Develop a Wind Screen Very Rapidly

This tree has long been used as a dignified screen for buildings or driveways, for backgrounds, or merely for privacy. It grows rapidly. Thrives in a wide range of soil and climatic conditions. Requires no pruning. Ultimate height 60 to 80 ft.

See Page 10
for 5 to 6 foot
Trees

Fine, strong seedling stock	}	6-12 in.	Per 100 4.80	Per 1000 24.00
		12-18 in.	7.00	35.00
		18-24 in.	10.00	50.00
(Shipping Charges Collect)				



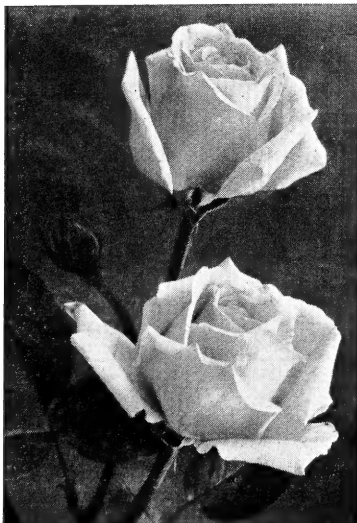
The New Moraine Locust

This is a vigorous, fast-growing seedless tree, shaped much like American Elm, but not susceptible to disease. A clean tree with no ugly, dangerous thorns, and no seed pods. The leaves are so fine that, when falling, they practically disappear. Will thrive in spite of smoke and soot, in all kinds of soil. It is hard wooded; bends, but rarely breaks or splits. Branches arch up and out, giving a wide-spreading vase shape. Fine foliage makes plenty of cool shade, but permits good lawn growth.

5 to 6 FEET
\$6.50 EACH
Exp. Chgs. Collect

1952 All-America Rose Winners

New **PATENTED** Beauties



HELEN TRAUBEL

PINK - APRICOT Patent No. 1028
Superior qualities. Color varies with the weather — sometimes a light, sparkling pink, more often a luminous apricot. Will prove to be a popular variety.

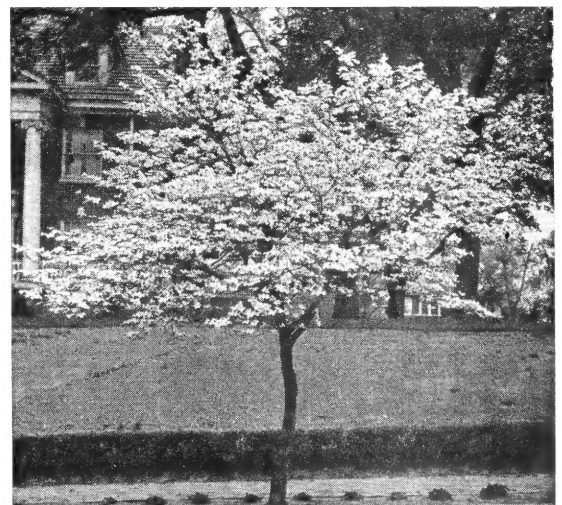
FRED HOWARD

YELLOW Patent No. 1006
Strong, hardy plant with dark shiny foliage. Produces quantities of long, rich yellow buds, tipped with delicate pencilings of light pink, from early spring until late fall.

VOGUE

CHERRY - CORAL Patent No. 926
A grand new introduction of the Floribunda family. Brilliant, cherry-coral with perfectly formed, high centered, Hybrid Tea-shaped, 3- to 4-inch flowers. Reaching a height of 2½ to 3 feet.

All 3 Roses
AS LISTED ABOVE
Only \$6.75
POSTPAID



White Flowering Dogwood (CHINESE)

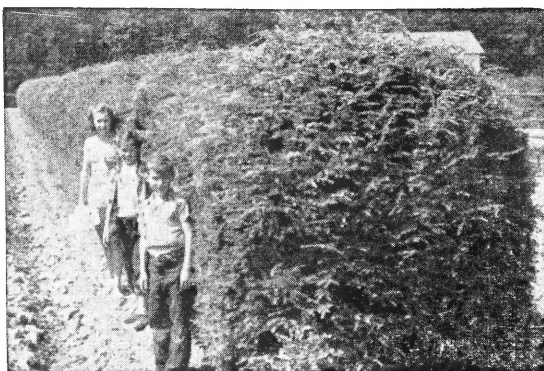
A very fast growing variety of this most beautiful of all spring flowering trees. Brilliant red leaves in fall. 18 to 24 in. Quan. prices, page 11.
10 FOR \$3.50
POSTPAID

Hedges - Windbreaks

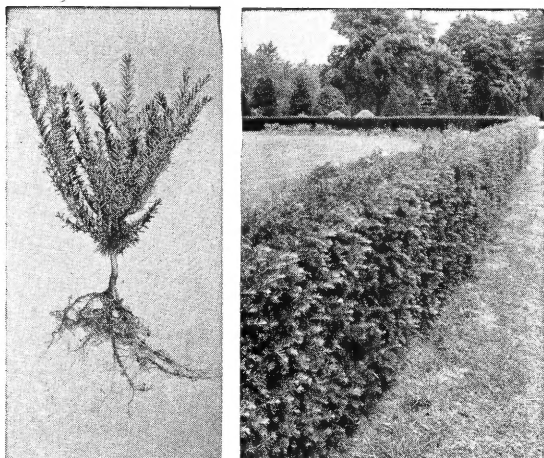
Pines, Spruce, Hemlock and Japanese Yew can be sheared and developed into beautiful, lasting hedges or windbreaks. They can be kept to almost any height for years. Start with small plants and shear the new tender growth each year to desired form and height.

SPACING FOR HEDGES OR WINDBREAKS
 LOW Hedge, 8-10 in. apart, or double rows 12 in. apart.
 MEDIUM Hedge, 3 to 4 feet, plant 1 to 2 feet apart.
 TALL Hedge, plant 3 to 5 feet apart.
 Send for our Special Folder on the planting and care of Hedges

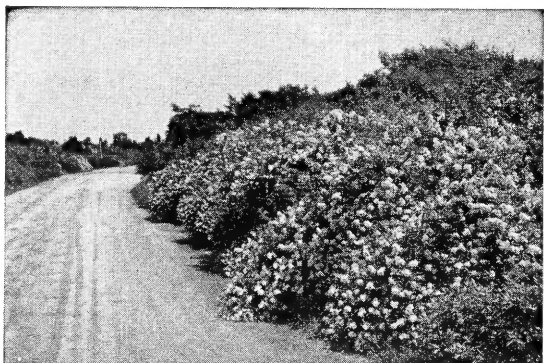
All orders will be shipped Express Charges Collect.
 Items marked (*) in lots of 10 at the 100 rate.



The Musser children beside a well developed HEMLOCK Hedge.



A fine, heavy branched, strongly rooted Musser JAPANESE YEW (*Taxus*) Transplant is shown at left. At right is shown a YEW HEDGE, notable for thick growth and lustrous dark green foliage.



ROSE HEDGE

(*Rosa Multiflora*)
 Thorny Type

A Living Fence

A Winter Paradise for Wild Bird Life

ROSA MULTIFLORA is a tall growing, very thorny shrub, like the wild rose. Very hardy even in poor soil. Grows 2 to 3 feet in a single season to an ultimate height of 6 to 8 feet. Ideal for use as living fence for farm use — keeps in cattle, horses, SHEEP and GOATS. Makes fast growing ground cover. Pinkish white blossoms literally cover plant in June. These are followed by profusion of large red berries which attract game birds such as grouse, pheasant, and partridge, as well as smaller birds. During winter its arching branches provide protection from snow and cold as well as food for birds.

ROSA MULTIFLORA JAPONICA, thorny type, BEST QUALITY, EXTRA HEAVY, 3 millimeter (tops sheared, anything under 3 millimeter graded out.)

	Per 100	Per 1000
10 to 18 inch	10.00	50.00

F.O.B., Indiana, Pa., packing free

Hedges

CANADIAN HEMLOCK

		Per 100	Per 1000
3-yr. Seedlings	4- 8 in.	9.00	45.00
3-yr. Seedlings	8-14 in.	12.00	60.00
Excellent stock, mostly branched. Equal to average 4-year.			
4-yr. Transplants	(3-1) 6-12 in.	16.00	80.00
*4-yr. Transplants	(2-2) 8-14 in.	20.00	100.00

JAPANESE YEW SEEDLINGS — Upright

*4-yr. Seedlings	(4-0) 6-12 in.	50.00	100.00
Capitata grown from seed, excellent stock, bushy plants. May be ordered in lots of 10 at 100 rate.			

JAPANESE YEW TRANSPLANTS

Two and three times transplanted. Lots of 10 at 100 rate.

* <i>Taxus Capitata</i> (Upright)	6-10 in.	75.00	100.00
* <i>Taxus Cuspidata</i> (Low, flat)	8-14 in.	75.00	100.00
* <i>Taxus Hicksi</i> (Columnar)	6-10 in.	40.00	100.00
	8-12 in.	50.00	100.00
	10-16 in.	75.00	100.00
	12-18 in.	150.00	100.00
	18-24 in.	200.00	100.00
* <i>Taxus Intermedia</i> (Spreader)	9-10 in.	100.00	100.00
* <i>Taxus Halloran</i> (Upright)	12-18 in.	150.00	100.00

For immediate hedge — just a little smaller than specimens. Packed ball of peat moss to each plant. ➡

GREEN BARBERRY

Very hardy hedge material.

4-yr. Seedlings	(4-0) 10-16 in.	20.00	50.00
-----------------------	-----------------	-------	-------

RED BARBERRY

Red Leaves all Summer — Berries in the Fall.

2-yr. Seedlings	(2-0) 10-16 in.	25.00	70.00
Fine Stock			
*4-yr. Seedlings	(4-0) 12-18 in.	40.00	100.00
Very well branched, heavy plants. Lots of 10 at 100 rate.			
*6-yr. Twice Transplants	20-24 in.	75.00	100.00
Very well branched, hedge size. Lots of 10 at 100 rate.			

PRIVET (Northern Hardy Amur River)

Hardest and best for northeastern conditions. Will grow 10 feet, but may be pruned to any height or form. Branches upright, foliage oval or oblong; made denser by pruning. Hardy, almost evergreen. Plant 1 foot apart. May be ordered in lots of 50 at 100 rate.

Seedlings (2 branches and up)	6-12 in.	12.00	60.00
-------------------------------------	----------	-------	-------

Windbreaks

CHINESE ELM (Hedge or Windbreak)

Fastest growing hedge. First to leaf, one of last to shed. Trim from 3 to 10 feet. The more you trim it the more dense and compact it becomes. Plant 8 inches apart.

	6-12 in.	4.00	20.00
	12-18 in.	6.00	30.00
	18-24 in.	9.00	45.00

LOMBARDY POPLAR

Tall columnar tree, ideal for use as screen or windbreak when planted 2 to 3 feet apart. Photo, page 11.

	6-12 in.	4.80	24.00
	12-18 in.	7.00	35.00
	18-24 in.	10.00	50.00

White and Red Pine, Norway and Blue Spruce

Are very desirable for both hedges and windbreaks. They can be sheared and developed very beautifully by cutting new tender growth each year.

Rhododendron

Our Rhododendrons quickly grow into fine bushy specimens of great value. A highly decorative shrub.

RHODODENDRON MAXIMUM

Hardy for full shade or partial shade. Large leaf, best foliage of any of the Rhododendrons. Bears large clusters of gorgeous flowers, shaded from white to shell pink, during late June and early July. Lots of 10 at 100 rate. Shipped express charges collect.

SELECT collected plants, single stem to lightly branched.	Per 100
8 to 10 inch (10 at 100 rate)	\$ 33.00
9 to 12 inch (10 at 100 rate)	38.00
SELECT, STRONG, CLUMPY plants, 3 to 5 branches.	
10 to 15 inch (10 at 100 rate)	125.00

RHODODENDRON CATAWBIENSE

Differs from Maximum as follows: Lower growing, smaller leaves, deep shades of pink and rose. Sun or partial shade. May be ordered in lots of 10 at 100 rate. Shipped express charges collect.

SELECT collected plants, single stem to lightly branched.	Per 100
4 to 8 inch (10 at 100 rate)	50.00
8 to 10 inch (10 at 100 rate)	60.00
SELECT, STRONG, CLUMPY plants, 3 to 5 branches.	
10 to 12 inch (10 at 100 rate)	150.00

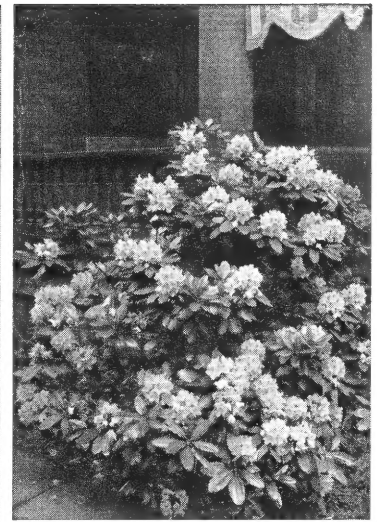
MOUNTAIN LAUREL

KALMIA (hardy). Slow growing, small leaved evergreen. Abundance of pink flowers, late May and early June. Sun or shade. Lots of 10 at 100 rate. Shipped express charges collect.

SELECT collected plants, 2 to 4 branches.	Per 100
8 to 10 inch (10 at 100 rate)	50.00
SELECT, STRONG, CLUMPY plants, 3 to 5 branches.	
10 to 15 inch (10 at 100 rate)	125.00

ACID SOIL — Use well rotted leaves, pine needles, sawdust or alum to make soil acid. See planting instructions sent with order acknowledgment.

OTHER FLOWERING SHRUBS ON NEXT PAGE



Rhododendron blooms in June-July — large pinkish-white flowers

NURSERY GROWN, IMPORTED, SELECT

Hybrid Grafted Rhododendron

Sturdy TWICE-TRANSPLANTED stock, the finest we have seen. All plants are well branched. Very scarce item. TRUE COLORS: Deep Red, Pink, Mauve, White. Shade first year, then sun or shade. Mostly budded, ready to bloom.

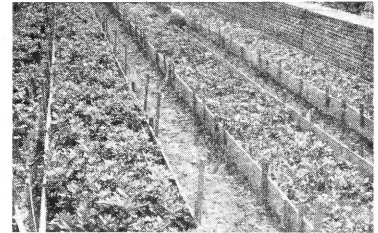
15 to 18 inch
well branched
GRAFTED
TRANSPLANTS

\$4.95
EACH

Express charges collect

Per 100 \$400.00

Lots of 10 at the
100 Rate
Express charges collect



Thousands of three-year-old GRAFTED RHODODENDRON are available for shipment this spring. TRUE COLORS ranging from DEEP RED to PURE WHITE shades.

RHODODENDRON CATAWBIENSE GRANDIFLORUM

EXTRA HEAVY BRANCHED, 2-year, nursery grown, field transplanted. Imported. Color, Orchid. Mostly budded, ready to bloom. Highly recommended. 12 to 15 inch Each

\$3.50

Per 100 (lots of 10 at 100 rate) \$300.00

Hardy AZALEA

GHENT VARIETY (Hardy)

Brilliant colors — choice of RED, YELLOW, ORANGE.

Plants have 20 to 30 flowering buds ready to bloom. Azalea requires sun and acid soil. It grows to an ultimate height of 4 to 6 feet.

Fine specimen IMPORTED plants.

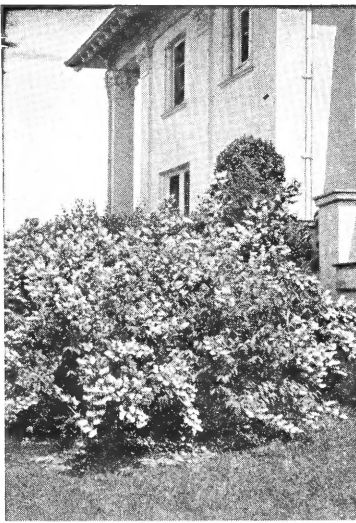
15 to 18 inches high, with mass of branches, 10 to 12 inches wide.

Supply Limited
ORDER AT ONCE!

\$4.95
EACH

Per 100 \$400.00

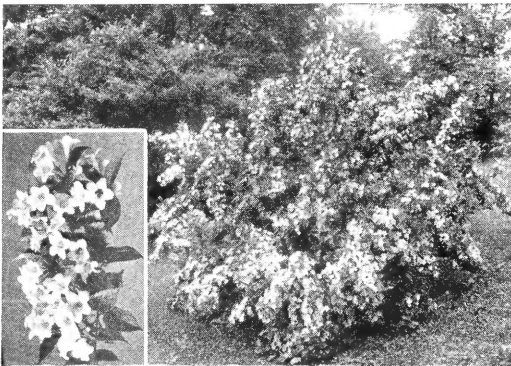
Lots of 10 at 100 rate
Shipped Express or Parcel Post Charges Collect



DEUTZIA (Pride of Rochester)
(White Flower)



FLOWERING QUINCE
(Red Flower)



WEIGELA (Rosea)
(Pink Flower)

Flowering Shrubs

Beautify with Living Color

No. C.O.D.'s.

All stock on this page must be paid for in full with order.

MOCK ORANGE

(Philadelphia Virginalis) The reliable, old sweet scented Mock Orange, known and loved by all. Will tolerate smoke and other hard city conditions. Maturity height, 5 to 6 feet.

SPIREA

(Vanhouttei) Probably best known of all the shrubs. Will tolerate shade and adverse city conditions. Grows in any soil. Completely covered with white flowers in June. 4 to 6 feet.

WEIGELA

(Rosea) Tall and vigorous, with deep pink blooms all summer. Reaches maturity height of 5 to 6 feet. Popular specimen shrub.

FORSYTHIA

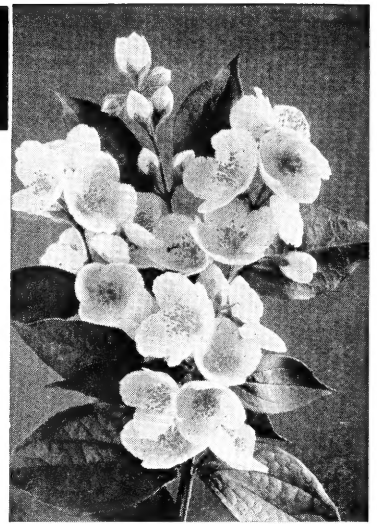
(Golden Bell) Long slender branches, entirely covered with dainty yellow blossoms, are the first sign of spring. 7 feet.

RED FLOWERING QUINCE

This is the old-fashioned Fire Bush. A gorgeous sight with its scarlet blossoms in April and May. Maturity height, 4 to 5 feet.

DEUTZIA

(Pride of Rochester) A perfect mass of lovely double white flowers tinged with pink in June. Grows in sun or partial shade. Maturity height, 5 to 6 feet.



SWEET MOCK ORANGE
(Waxy White Flower)



FORSYTHIA (Golden Bell)
(Yellow Flower)



Our Special Folder on the Planting and Care of Flowering Shrubs is available on request.

SPIREA (Vanhouttei)
(White Flower)

ALL THESE SHRUBS
ARE HARDY, AND
WELL BRANCHED

Shipped Postpaid



SPECIAL No. 7
1 Each
BEAUTIFUL SHRUBS
AS SHOWN ABOVE

6 Shrubs

2-Year, No. 1
Blooming Size
1½ to 2 Feet Tall

\$6.50
Postpaid

OR: } 3 EACH, ANY TWO VARIETIES, ALL 6 FOR \$6.50 POSTPAID
 } 6 OF ANY ONE VARIETY, ALL 6 FOR \$6.50 POSTPAID

\$1.00 DISCOUNT

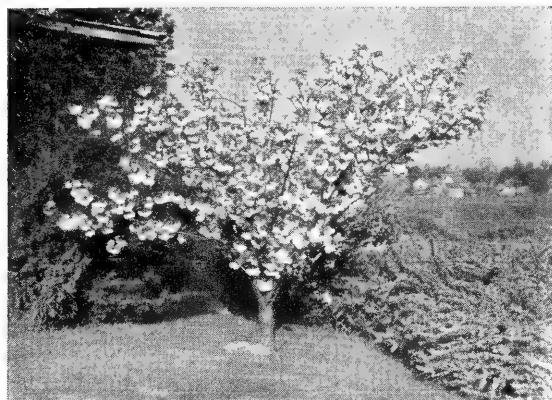
On any group of 4 Flowering Trees listed on this page, deduct \$1.00 from total list price for 4 trees.

Flowering Trees

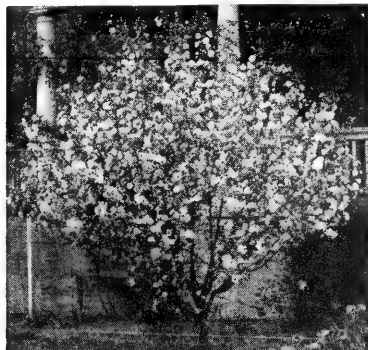
No. C.O.D.'s. All stock on this page must be paid for in full with order.
Shipped Express Charges Collect.



PAUL'S SCARLET HAWTHORN



PINK FLOWERING CHERRY



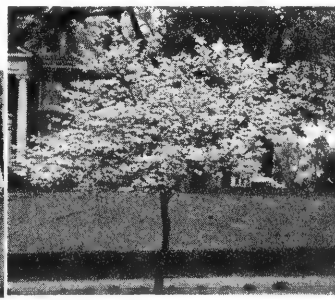
RED FLOWERING CRAB



For a
**GLORIOUS
SPRING --**
Flowering Trees



TREE WISTERIA



FLOWERING DOGWOOD



MAGNOLIA

	Each
PAUL'S SCARLET HAWTHORN	4-5 ft. 3.75
Lovely flowering shrub or small tree, growing about 15 feet tall, with spreading branches. The leaves are broad, the 3 to 5 lobes much toothed. Its flowers are a brilliant rosy red, double, in large clusters and produced in immense quantities. The fruits are scarlet. Well suited for the small yard, where a maple would be too large or create too much shade.	
PINK FLOWERING CHERRY (Kwanzan)	3-4 ft. 3.50
A low growing (6 ft.) tree. It makes a striking appearance on the lawn because of its unique form, and is specially attractive when covered with showy clusters of dainty, rose-pink flowers before the leaves appear in the spring.	
PRUNUS PISSARDI (Purple Leaf Plum)	4-5 ft. 2.75
Leaves are purple and more lasting than many purple-leaf plants. Grows approximately 10 feet high and gives excellent foliage contrast in a shrub border.	
JUDAS TREE OR REDBUD	3-4 ft. 2.75
Fable tells us that when Judas betrayed Christ this tree immediately dripped all over with drops of blood, and that is the way it looks today when its blossoms first come out. Later they turn into beautiful rosy purple flowers. Blossoms in April, before the leaves appear. 15 to 20 feet maturity height.	
PURPLE FRINGE (Smoke Tree)	2-3 ft. 2.50
A tree much admired for its curious fringe or hair-like flowers that cover the surface of the plant in midsummer. It creates an effect of mystic clouds entirely covering the plant. Handsome foliage adds its share of beauty to the plant. Likes plenty of sunshine and light, well drained soil. Grows to a height of 10 to 12 feet, and its spreading habit requires considerable space.	
TREE HYDRANGEA	3-4 ft. 3.50
Large pyramidal trusses of pure snow-white blossoms appear in early August. As fall approaches they change to a luminous pink. At this stage they may be cut for all-winter dry bouquets. Blossoms measure a foot long and 6 to 8 inches wide. A low growing tree, standing not more than 4 to 6 feet in height.	
RED FLOWERING CRAB (Malus Floribunda)	4-6 ft. 3.25
This small tree is round topped with single carmine buds that change to pink and then white. Very heavy blossomer with small fruit of blood red. Will stand severe winters and drought. Grows 15 to 20 feet.	
WHITE FLOWERING CRAB	3-4 ft. 2.75
Similar to Red Flowering Crab but with white flowers.	
BECHTEL'S CRAB	3-4 ft. 3.25
This choice variety Crab has endeared itself to many growers because of its spectacular flood of large, double-rose-like flowers in spring which completely hide the branches. Blooms every year. In general it resembles an Apple tree but is much smaller and finer branched. It grows in many locations and benefits from the same care given Apple trees.	
TREE WISTERIA	3-4 ft. 5.75
No more lovely sight can be imagined than a Tree Wisteria in bloom. The purplish blue flowers completely cover the tree during May, transmuting it into a sheer beauty. In formal gardens they are indispensable. On the lawn they develop into beautiful specimens and live for generations, increasing in beauty and dignity each successive season. GRAFTED, SURE-TO-BLOOM. BAILED IN PEAT.	
RED FLOWERING DOGWOOD	2½-3 ft. 3.75
Outstanding among ornamental trees. A profusion of showy rose colored blossoms in spring is followed by deep red foliage in fall. Grows 15 to 20 feet tall.	
WHITE FLOWERING DOGWOOD	3-4 ft. 3.25
One of the most beautiful of all spring flowering trees. Lovely four-petaled white blossoms are borne on spreading branches early in spring. Leaves turn brilliant red in fall. Valuable when used in lawn border or as specimen plants. Unsurpassed when used for naturalizing effect. Grows 15 to 20 feet tall.	
MAGNOLIA (Saucer Magnolia)	2-3 ft. 4.75
One of the most hardy of the Magnolias. Large, fragrant, rose-colored flowers cover the tree in early spring. Blossoms when very small. Select sheltered location so flower buds will not be injured by late frosts. Grows 10 to 15 feet tall. Blooming size.	

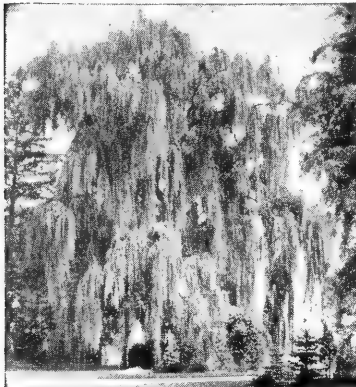
SHADE and NUT TREES

Special No. 8

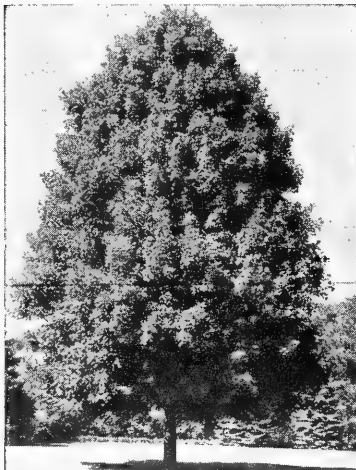
ONE EACH All Three
SHADE TREES

PICTURED BELOW —
FOR ONLY **\$9.50**

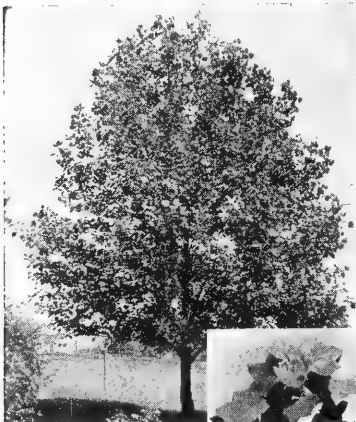
Shipped Express Charges Collect
ONLY PREMIUM STOCK



Weeping Willow, 6-8 ft.



Norway Maple, 6-8 ft.

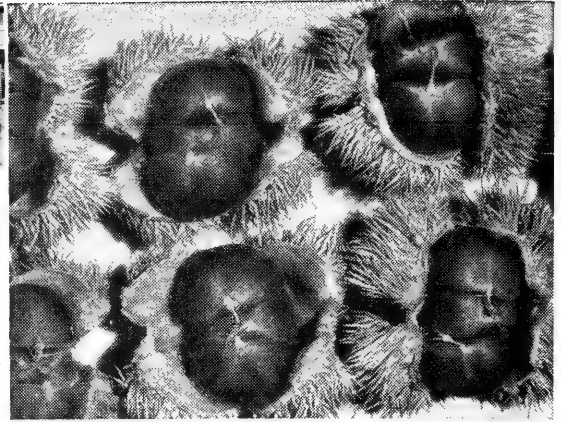


Tulip Poplar, 6-8 ft.

Finest Quality Trees

Best Sizes for Successful
Transplanting

Sorry, no C.O.D.'s. All stock on this page must be paid in full with order. Shipped Express Charges Collect.



New Blight Resistant Chinese Chestnut Bears Generously

	Actual Size	Each	Per 3
WHITE BIRCH	5-6 ft.	4.00	10.00
One of the most beautiful novelties in shade trees. When mature, bark is white and the leaves are a fine light green. Plant several in each location for a rare and picturesque clump, winning the admiration of friends and neighbors.			
NEW CHINESE CHESTNUT (Blight resistant)	3-4 ft.	3.50	9.50
Will bear large, sweet, delicious nuts 2 years after planting. Very fast growing. Valuable for ornamental and shade, as well as for fruit. Plant 2 or more for pollination. Grows 30 to 40 feet tall. See photo above and on next page.			
WEeping WILLOW (Wisconsin)	6-8 ft.	2.50	6.50
Very rapid growing tree with graceful drooping branches. Will succeed in any location, but prefers moist soil. Especially effective near pools or river banks, along drives or as specimen plants. Frequent cutting back gives a thicker growth of bright green twigs. Grows 25 to 30 feet tall. Illustrated at left.			
NORWAY MAPLE	6-8 ft.	4.50	12.75
One of the best trees for street planting or for lawn specimens where good form and shade are needed. Its dense leaves are rich green and are held on tree about two weeks longer than other maples. Grows 50 to 60 feet tall. See photo at left.			
SILVER MAPLE	5-6 ft.	3.25	8.75
Most rapid grower of all maples. A large, spreading tree which, at maturity, has a height of 60 to 70 feet. A cut leaf with a silvery cast, and also a silvery bark. Sap is good for sugar making.			
SUGAR MAPLE (Hard Maple)	6-8 ft.	4.50	12.75
Brilliant scarlet, orange and yellow foliage in fall. Mature trees are the source of delicious maple sugar from sap in spring. Handsome form.			
RED LEAF SCHWEDLER MAPLE	6-8 ft.	5.50	15.75
This is a beautiful tree in all seasons. In the spring, the foliage is a reddish purple, followed by a bronzy green color in the summer. It is very attractive in the fall when its foliage is a golden yellow. It is recommended for specimen planting in lawns. Symmetrical in growth. Not a fast growing tree.			
CRIMSON KING MAPLE	4-5 ft.	6.50	18.50
You will want to be one of the first to own this new tree. It is a beautiful form of Schwedler Maple, originating in Europe. Like the Schwedler, it develops a rounded, compact top of unusual symmetry, but differs in having foliage of deep, purple-crimson all through the growing months.			
RED LEAF DWARF MAPLE	1-1½ ft.	5.75	16.50
Grows 8 to 10 feet. Leaves are a startling crimson all summer. Develops best color in sun, but will tolerate some shade.			
CUT-LEAF WEeping BIRCH (Silver Birch)	5-6 ft.	4.50	12.75
Graceful white-barked tree with delicate drooping branches. One of the few shade trees under which grass will grow. The white bark, which develops a year or two after planting, is beautiful in all seasons. Grows 20 to 30 feet tall.			
TULIP POPLAR (Liriodendron Tulipifera)	6-8 ft.	3.50	9.50
One of the largest deciduous shade trees. Large, glossy, fiddle-shaped leaves. Large greenish-yellow and orange flowers develop cone-like fruits. Photo, left.			
LOMBARDY POPLAR	5-6 ft.	1.50	4.00
Tall columnar tree, ideal for use as screen or windbreak. Thrives in wide range of soil and climatic conditions. Grows unusually fast, requires no pruning. Grows 60 to 80 feet. Photograph is shown on the next page.			
CHINESE ELM	6-8 ft.	3.50	9.50
For quick shade. A very rapid grower with small, dense foliage. Excellent for tall hedge or windbreak. Stands intense cold and extreme heat remarkably well. Excellent shade in 5 short years. Grows to 30 to 40 feet. Photo on next page.			
MOUNTAIN ASH	5-6 ft.	4.50	12.75
One of the most ornamental of all trees. Bears large clusters of bright orange-red berries from mid-summer until late fall. Grows 20 to 30 feet tall.			
PIN OAK	6-8 ft.	6.25	17.50
Most wanted shade tree for street and lawn planting. Fastest growing of the oaks. Pyramidal form makes pruning unnecessary, and permits grass to grow. Adapts to all locations. Disease resistant. Grows 30-40 ft. Photo on next page.			
MORaine LOCUST	5-6 ft.	6.50	xxxx
(Plant Pat. 836.) This is a vigorous, fast-growing, seedless tree, shaped much like American Elm, but not susceptible to disease. A clean tree with no ugly dangerous thorns, and no seed pods. The leaves are so fine that, when falling, they practically disappear. Thrives in spite of smoke and soot, on all kinds of soil. Hard wooded; bends but rarely breaks or splits.			

Our Special Folder on the Planting and Care of Shade Trees will be sent on request.

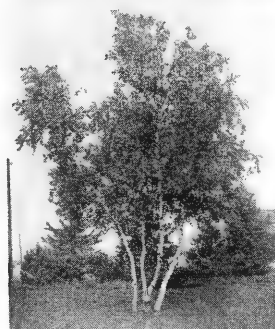
SHADE and HARDWOOD SEEDLINGS



SHIPPED PARCEL POST or EXPRESS CHARGES COLLECT

No orders for less than 100 except where specified.

Stock on this page must be paid in full before order is shipped.



WHITE BIRCH



CHINESE CHESTNUT



AMERICAN PLANE



BLACK WALNUT



PIN OAK

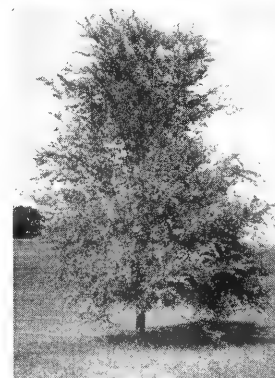
	Per 100	Per 1000
WHITE BIRCH (Clump Birch) 16-24 in.	10.00	50.00
One of the most beautiful novelties in shade trees. When mature, the bark of the trees is white and the leaves are of a fine green. Plant several in each location for a rare and picturesque clump formation which will win the admiration of friends and neighbors.		
CHINESE CHESTNUT (Blight Resistant) ... 18-24 in.	80.00	xxxx
Seedling stock of variety described on preceding page. MAY BE ORDERED IN LOTS OF 10 AT 100 RATE.		
LOMBARDY POPLAR 6-12 in.	4.80	24.00
Tall columnar tree, ideal for use as screen or wind-break when planted 2 to 3 feet apart. Seedling stock of variety described on preceding page. Photo at right.	12-18 in.	7.00 35.00
	18-24 in.	10.00 50.00
TULIP POPLAR (Liriodendron Tulipifera) 6-12 in.	4.00	20.00
Sometimes known as Whitewood. One of the largest and most valuable deciduous trees for timber and ornamental purposes. Handsome glossy, fiddle shaped leaves. Large greenish-yellow and orange flowers develop into dry cone-like fruits from which winged seeds are released in fall. Photo on preceding page.	12-18 in.	6.00 30.00
	18-24 in.	9.00 45.00
AMERICAN REDBUD or Judas Tree 6-12 in.	8.00	40.00
(Cercis Canadensis) Seedling stock, variety described, Page 9		
WHITE FLOWERING DOGWOOD 6-12 in.	12.00	60.00
Seedling stock of variety described on Page 9		
	18-24 in.	24.00 120.00
RED FLOWERING DOGWOOD 18-24 in.	200.00	xxxx
Seedling stock of variety described on Page 9 MAY BE ORDERED IN LOTS OF 10 AT 100 RATE		
WEeping WILLOW (Golden) 6-12 in.	10.00	50.00
Distinguished from Wisconsin variety by bright golden bark. Grows 50 to 60 feet. Otherwise like Wisconsin, preceding page.		
HONEY LOCUST (Thornless) 6-12 in.	5.00	25.00
Tall deciduous tree for shade or lawn specimen. Small fragrant greenish flowers in early summer are followed by large, glossy, brown ornamental pod in the fall. Attracts bees. Photo at right.		
BLACK LOCUST 6-12 in.	3.00	15.00
Thrives in any soil. Fragrant clusters of white pea-like blossoms cover the tree in spring, followed by small brown seed pods in fall. Attracts bees.		
AMERICAN PLANE 6-12 in.	6.00	30.00
(SYCAMORE OR BUTTOWOOD) -- Hardy native tree, attractive in winter for picturesque white branches. Valuable summer shade tree. Thrives along wet stream banks but will give good results as lawn or street tree. Stands pruning well. Photo at left.		
WHITE OAK 6-12 in.	12.50	65.00
Monarch of deciduous trees. Splendidly adapted for lawn or street use, where rapid growth is not required. Disease resistant. Beautiful dark red, autumn coloring. MAY BE ORDERED IN LOTS OF 50 AT 100 RATE		
CHINESE ELM 6-12 in.	4.00	20.00
Seedling stock of variety described on preceding page. Widely planted for fast growing hedges.	12-18 in.	6.00 30.00
	18-24 in.	9.00 45.00
AMERICAN ELM 6-12 in.	2.80	14.00
One of the best loved of our native American trees. Straight trunk branching into graceful vase-shaped head. Unsurpassed as shade tree for lawn or street.		
BLACK WALNUT 12-18 in.	14.00	70.00
Seedling stock of variety described on preceding page.		
WHITE ASH, GREEN ASH 6-12 in.	3.60	18.00
Easy to grow. Tall oval shape permits lawn grass to grow beneath its branches. Brilliant yellow autumn foliage.		
NORWAY MAPLE 4- 8 in.	12.00	60.00
Seedling stock of variety described on preceding page. MAY BE ORDERED IN LOTS OF 50 AT 100 RATE.		
SUGAR MAPLE 6-12 in.	9.00	45.00
Hard maple. Mature trees provide maple sugar products from sap in spring. Brilliant scarlet autumn foliage. Fast growing.		
SHELLBARK HICKORY 6-12 in.	20.00	100.00
Distinctly American tree of walnut family. Derives name from long, flat loose plates of rough bark appearing on mature trees. Produces white, sweetkerneled nuts. Attracts game. Valuable timber tree. May be ordered in lots of 50 at 100 rate.		



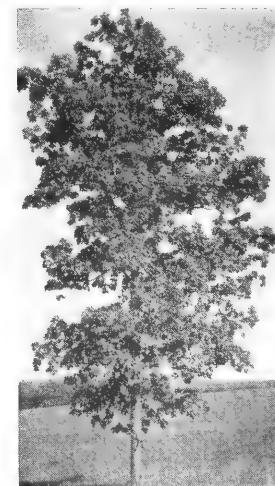
LOMBARDY POPLAR



HONEY LOCUST



CHINESE ELM



SHELLBARK HICKORY

Ask for Any Items or Sizes not Listed

TERMS

No order can be accepted for less than units of fifty (50) of one variety and size except on items marked with an asterisk (*). Fifty of one kind and size sold at 100 rate, 500 at 1000 rate, shipped, f.o.b. Indiana, Pa. by express collect (unless otherwise noted).

Our liability ceases when trees are delivered to carrier.

Orders may be booked with one-half cash with order, balance C. O. D. Fifty (50) cents packing on less than 1000.

All prices are NET, no discounts for cash or quantity.

Prices subject to change without notice.



Special Strain Scotch Pine

SCOTCH PINE — Riga Strain Per 100 Per 1000
2-yr. Seedlings (2-0) 2-4" 3.00 15.00

SPECIAL STRAIN SCOTCH PINE

Grown from seed collected by our own men from selected parent trees — exceptionally healthy, sturdy, straight-stemmed specimens, with rich green color.

2-yr. Seedlings (2-0) 3-6" 5.00 25.00
2-yr. Seedlings (2-0) 4-8" 7.00 35.00
Excellent. Recommended size for field planting.

3-yr. Seedlings (3-0) 8-14" 11.00 55.00

4-yr. Transplants (2-2) 5-10" 25.00

*5-yr. Transplants (2-3) 14-18" 40.00
Lots of 10 at 100 rate.

*6-yr. Transplants (3-3) 18-24" 75.00
Lots of 10 at 100 rate.

*7-yr. Twice Transplants 24-32" 150.00
Sheared, bushy. 10 at 100 rate.

AUSTRIAN PINE

Beautiful compact Ornamental and Christmas tree

2-yr. Seedlings (2-0) 3-5" 6.00 30.00

2-yr. Seedlings (2-0) 3-8" 8.00 40.00

3-yr. Seedlings (3-0) 6-12" 20.00

*4-yr. Transplants (2-2) 9-14" 50.00
Lots of 10 at 100 rate.

SHIPPING SEASON

will begin between March 15 and April 15. Orders will be filled as rapidly as possible from then on. All stock shipped in a dormant condition and may be safely transplanted in any part of the country, regardless of your season.

Musser's Spring 1952 Wholesale Planting List

Musser Forests, Inc., Indiana, Pennsylvania

Phone INdiana 5-4091

MUGHO PINE — True Dwarf Per 100 Per 1000
2-yr. Seedlings (2-0) 2-3" 4.00 20.00
4-yr. Seedlings (4-0) 6-12" 20.00 100.00
*5-yr. Twice Trans. (3-1-1) 7-10" 50.00
Branched. 10 at 100 rate.

BANKS PINE

Fastest growing Christmas tree. (Must be sheared.) Also timber

2-yr. Seedlings (2-0) 4-6" 3.00 15.00

2-yr. Seedlings (2-0) 5-9" 4.00 20.00

3-yr. Seedlings (3-0) 10-15" 6.00 30.00

WHITE PINE

One of the best timber species; also Christmas tree

2-yr. Seedlings (2-0) 2-4" 5.00 25.00

2-yr. Seedlings (2-0) 3-6" 6.00 30.00

3-yr. Seedlings (3-0) 5-10" 10.00 50.00

*5-yr. Transplants (2-3) 6-12" 20.00
Mostly well branched. 10 at 100 rate.

*6-yr. Transplants (3-2-1) 12-16" 50.00
Lots of 10 at 100 rate.

AMERICAN RED PINE

Excellent Timber and Christmas tree. Seed selected by our men from outstanding specimen trees in finest American virgin forests.

2-yr. Seedlings (2-0) 2-4" 6.00 30.00

2-yr. Seedlings (2-0) 3-5" 7.00 35.00

3-yr. Seedlings (3-0) 6-10" 10.00 50.00

3-yr. Transplants (2-1) 4-8" 18.00 90.00

4-yr. Transplants (2-2) 6-12" 30.00 150.00

*6-yr. Twice Trans. (2-2-2) 12-16" 50.00
Lots of 10 at 100 rate.

*8-yr. Twice Trans. 24-32" 150.00
Sheared back to make bushy trees with small ball peat moss each plant. 10 at 100 rate.

PONDEROSA PINE

Hardy, fast growing western yellow pine for timber

2-yr. Seedlings (2-0) 4-6" 6.00 30.00

3-yr. Seedlings (3-0) 6-12" 9.00 45.00

JAPANESE BLACK PINE — Thunbergii

Light green needles 4½ inches long — hardy, valuable for use in exposed conditions along the seashore.

2-yr. Seedlings (2-0) 3-6" 8.00 40.00

BLACK HILLS SPRUCE

Most compact Spruce

2-yr. Seedlings (2-0) 2-5" 4.00 20.00

3-yr. Seedlings (3-0) 5-10" 12.00 60.00

5-yr. Transplants (4-1) 4-9" 15.00

SERBIAN SPRUCE—Picea Omorika—Valuable Ornamental

Tall, symmetrical habit of growth, with very narrow branch spread. Needles ½ to ¾ inch long.

2-yr. Seedlings (2-0) 3-5" 10.00 50.00

MUSSER EXCLUSIVE NORWAY SPRUCE

Seed selected from specimen trees showing characteristics of fast growth, straight stem, excellent foliage. Per 100 Per 1000

2-yr. Seedlings (2-0) 5-10" 7.00 35.00

3-yr. Seedlings (3-0) 10-15" 14.00 70.00

3-yr. Seedlings (3-0) 15-22" 18.00 90.00

4-yr. Transplants (3-1) 10-15" 20.00 100.00

NORWAY SPRUCE

Per 100 Per 1000

Grown from seed of best strains.

One of the finest for Christmas trees and Timber.

2-yr. Seedlings (2-0) 2-4" 3.20 16.00

2-yr. Seedlings (2-0) 3-6" 4.00 20.00

3-yr. Seedlings (3-0) 4-8" 7.00 35.00

4-yr. Seedlings (4-0) 8-16" 10.00 50.00
Heavy stems

4-yr. Transplants (2-2) 6-10" 17.00 85.00

*6-yr. Twice Trans. 12-16" 50.00
Very well branched, very bushy trees. Packed in peat moss — bare root. 10 at 100 rate.

*7-yr. Twice Trans. 16-20" 100.00
Lots of 10 at 100 rate.

*8-yr. Twice Trans. 20-26" 150.00

Sheared, bushy, well branched specimen trees
Packed in ball of peat moss. 10 at 100 rate.

*9-yr. Twice Trans. 24-36" 200.00
Packed in ball of peat moss. 5 at 100 rate.

COLORADO BLUE SPRUCE

Excellent stock — finest in the country.

One of the finest for Christmas trees. Sturdy and compact in form, straight stem, ranging in color from slightly blue-green to marvelous blue. The seed has been collected at very high cost from trees showing only the best characteristics.

2-yr. Seedlings (2-0) 2-4" 4.00 20.00

3-yr. Seedlings (3-0) 3-6" 5.00 25.00

3-yr. Seedlings (3-0) 5-10" 7.00 35.00

Very superior stock.

4-yr. Transplants (3-1) 3-6" 10.00 50.00

4-yr. Transplants (3-1) 6-9" 15.00 75.00

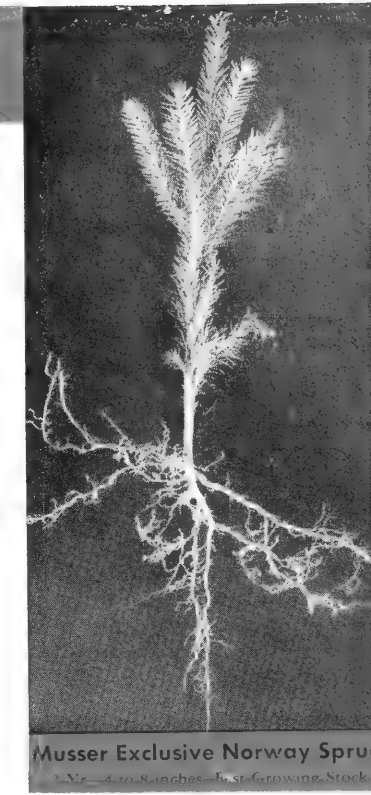
*5-yr. Transplants (3-2) 6-10" 25.00 150.00
Extra heavy, branched, bushy. 10 at 100 rate.

*6-yr. Transplants (3-3) 9-14" 50.00 200.00
Extra heavy, branched, bushy. 10 at 100 rate.

*6-yr. Transplants (Potted) 6-8" 65.00
Heavy branches, mass of roots. Grown in 4" pots.

*8-yr. Twice Trans. 12-18" 200.00
Sheared, bushy, well branched. 5 at 100 rate.

*9-yr. Twice Trans. 18-24" 300.00
Lots of 5 at 100 rate.



Musser Exclusive Norway Spruce

EXPLANATION

OF LIST

The figures 2-0, 2-1, 2-2-1 indicate the number of years the trees have been in the seed beds and the transplant beds. The first figure indicates the number of years in the seed bed. A dash followed by a figure indicates a transplanting. The second figure is the number of years in the first transplant bed, the third figure the number of years in the second transplant bed. Thus the sum of all figures is the total age of the tree. For instance, (2-2) indicates a tree that was transplanted when it was a seedling, and has grown two years in a transplant bed.

Number of Trees Required per acre for different spacings:	
3 x 3	4,840
4 x 4	2,722
5 x 5	1,742
6 x 6	1,210

WHITE SPRUCE

Per 100 Per 1000

Very similar to Norway. Fast growing strain, note size.

2-yr. Seedlings (2-0) 4-8" 6.00 30.00

3-yr. Seedlings (3-0) 8-16" 10.00 50.00

5-yr. Transplants (4-1) 6-12" 15.00 75.00

*6-yr. Twice Trans. 10-16" 50.00
Heavy, bushy. 10 at 100 rate.

*8-yr. Twice Trans. 18-24" 150.00
Sheared. 10 at 100 rate.

CANADIAN HEMLOCK

Lacy, graceful growing habit. Can be sheared to any size. Hedges, Specimen Ornamentals. Full shade or full sunlight.

2-yr. Seedlings (2-0) 4-8" 7.00 35.00

3-yr. Seedlings (3-0) 8-14" 15.00 75.00

4-yr. Transplants (2-2) 8-14" 20.00 100.00

BALSAM FIR

Christmas tree and Ornamental — excellent stock. Similar to Douglas Fir.

2-yr. Seedlings (2-0) 2-3" 6.00 30.00

4-yr. Seedlings (4-0) 5-10" 10.00 50.00

4-yr. Transplants (3-1) 4-9" 14.00 70.00

*7-yr. Twice Trans. 12-18" 40.00
Select, bushy, heavy. 10 at 100 rate.

More Items on next Page ➡

MUSSER QUALITY enables us to sell 20 MILLION TREES A YEAR

Musser's 1952 Planting List

(CONTINUED)

DOUGLAS FIR		Per 100	Per 1000
Rocky Mountain type — superior Ornamental and Christmas tree.			
2-yr. Seedlings	(2-0) 3-6"	6.00	30.00
2-yr. Seedlings	(2-0) 4-8"	9.00	45.00
*7-yr. Twice Trans.	12-16"	50.00	
Bushy. Lots of 10 at 100 rate.			

CONCOLOR FIR		Per 100	Per 1000
Excellent ornamental — one of the best Christmas trees Holds needles best of any short needle tree. Bluish color.			
2-yr. Seedlings	(2-0) 3-7"	12.00	60.00
4-yr. Transplants	(2-2) 5-10"	20.00	

FRAZER FIR		Per 100	Per 1000
Often called Southern Balsam Fir. Shiny green foliage is lighter on under side. Has delightful fragrance and attractive purplish cones. Hardy. Good ornamental or Christmas tree.			
2-yr. Seedlings	(2-0) 2-4"	12.00	60.00

JUNIPER VIRGINIANA		Per 100	Per 1000
3-yr. Seedlings	(3-0) 6-10"	8.00	40.00
4-yr. Transplants	(2-2) 8-16"	10.00	60.00
Grafting size.			

UPRIGHT JUNIPER — Virginiana		Per 100	Per 1000
*6-yr. Transplants	(3-3) 18-24"	75.00	
Lots of 10 at 100 rate.			

AMERICAN ARBORVITAE		Per 100	Per 1000
Popular for Hedges and Ornamentals			
3-yr. Seedlings	(3-0) 3-8"	6.00	30.00
4-yr. Transplants	(2-2) 6-10"	16.00	

PYRAMIDAL ARBORVITAE		Per 100	Per 1000
True pyramidal grown from cuttings. Dark green. Requires sun.			
Rooted Cuttings, Transplanted	4-6"	25.00	
*Transplanted Cuttings	6-12"	50.00	
May be ordered in lots of 10 at 100 rate			

GLOBE ARBORVITAE — Parson. One of best.		Per 100	Per 1000
Rooted Cuttings, Transplanted	4-6"	25.00	

ANDORRA JUNIPER		Per 100	Per 1000
Rooted Cuttings	3-5"	25.00	

PFITZER JUNIPER		Per 100	Per 1000
Dwarf spreading ornamental. Requires sun.			
Green — Rooted Cuttings	4-6"	25.00	
Hetzi Glauca — Rooted Cuttings	5-6"	25.00	
Blue — fast growing type.			
*Hetzi Glauca — Transplants	6-10"	65.00	
Blue fast growing type — heavy stem, branched, bushy. May be ordered in lots of 10 at 100 rate			
*Hetzi Glauca — Transplants	10-15"	90.00	
Blue fast growing type — heavy stem, branched, bushy. May be ordered in lots of 10 at 100 rate.			

JAPANESE YEW ROOTED CUTTINGS		Per 100	Per 1000
Heavy fine plants.			
Cuspidata (Low, flat)	5-7"	25.00	
Hicksi (Columnar)	6-8"	25.00	
Browni (Spreader)	3-5"	25.00	
Hatfield (Upright)	6-8"	25.00	

JAPANESE YEW SEEDLINGS — Upright		Per 100	Per 1000
*4-yr. Seedlings	(4-0) 6-10"	45.00	300.00
Capitata, excellent stock, bushy plants. 10 at 100 rate.			
4-yr. Seedlings	(4-0) 10-14"	65.00	

JAPANESE YEW TRANSPLANTS		Per 100	Per 1000
Two and three times transplanted. May be ordered in lots of 10 at 100 rate			
*Taxus Capitata (Upright)	6-10"	75.00	
*Taxus Cuspidata (Low, flat)	8-14"	75.00	
*Taxus Hicksi (Columnar)	6-10"	40.00	
For immediate hedge — just a little smaller than specimens.			
	8-12"	50.00	
	10-16"	75.00	
Packed ball of peat moss to each plant	12-18"	150.00	
	18-24"	200.00	

*Taxus Intermedia (Spreader)	9-10"	100.00	
*Taxus Hatfield (Upright conical)	6-10"	40.00	
	8-12"	50.00	
Extra heavy	8-12"	75.00	
*Taxus Halloran (Upright)	12-18"	150.00	

GREEN BARBERRY		Per 100	Per 1000
Very hardy hedge material.			
4-yr. Seedlings	(4-0) 10-16"	12.00	50.00

RED BARBERRY		Per 100	Per 1000
Red leaves all Summer — Berries in the Fall.			
2-yr. Seedlings	(2-0) 10-16"	25.00	70.00
Fine stock.			
*4-yr. Seedlings	(4-0) 12-18"	40.00	
Very well branched, heavy plants. 10 at 100 rate.			
*6-yr. Twice Trans.	20-24"	75.00	
Very well branched, hedge size. 10 at 100 rate.			

WHITE DOGWOOD — Chinese		Per 100	Per 1000
	18-24"	24.00	120.00

JAPANESE LARCH		Per 100	Per 1000
Deciduous tree, beautiful, soft needles appear early in spring. Fast growing timber tree. Especially beautiful in groves, with lower branches trimmed away.			
2-yr. Seedlings	(2-0) 10-18"	6.00	30.00

WHITE BIRCH — Clump Birch		Per 100	Per 1000
When mature bark is white; leaves, fine green. Plant for clump formations.			
Seedlings	16-24'	10.00	50.00

NORWAY MAPLE		Per 100	Per 1000
For street planting or lawn specimen. Dense, rich green leaves.			
Seedlings	4-8"	12.00	60.00

MYRTLE (Vinca Minor, Periwinkle)		Per 100	Per 1000
Evergreen Ground Cover. One of the best ground covers, small shiny evergreen leaves, and violet-blue flowers in spring. Thrives in shade. Especially valuable for planting under trees or in other spots where grass will not grow. Plant 1 ft. apart. 10 at 100 rate.			
Medium, Lining Out Grade	8-12"	8.00	35.00

ENGLISH IVY (Evergreen Ivy)		Per 100	Per 1000
Vine and Ground Cover. Very similar to Boston Ivy, but is evergreen the year around, and has a much smaller leaf. For walls, fences, etc. One of the very best evergreen ground covers. Especially desirable under shrubbery.			
Rooted Cuttings	6-8"	15.00	70.00
3-yr. Transplants		50.00	
Individual plants grown in 4 inch pots. Mass of roots — sheared back 2 to 5 runners. Plants shipped with earth and peat moss, individually paper wrapped. 10 at 100 rate.			

PACHYSANDRA TERMINALIS (Spurge)		Per 100	Per 1000
Evergreen Ground Cover. Dense, lustrous green, trailing vine.			
1-yr. Plants	2-4"	9.00	80.00

ROSA MULTIFLORA		Per 100	Per 1000
	10-18"	10.00	50.00
A Living Fence. A tall growing, very thorny shrub, like the wild rose. Very hardy in poor soil. Grows 2 to 3 feet in a single season to an ultimate height of 6 to 8 feet. Ideal for use as a living fence for farm use.			

Hybrid TEA ROSES

Lovely Roses - June 'til Frost



Any Six EVERBLOOMING Hybrid Tea Roses

— PLUS —

1 - RED CLIMBING ROSE
(Paul's Scarlet)

The Hardest Climber

SPECIAL No. 9

All 7 Roses

For only \$8.00
Postpaid

Here is a selection of 12 2-year field grown Rose bushes. These are everblooming Hybrid Tea varieties that will start blooming early in the summer and bloom all season. We know these plants will give you complete satisfaction. We highly recommend these superb roses.



EVERBLOOMING <i>Hybrid</i> Tea Roses	Any 3	\$3.85	} Order by Number. Also State COLOR POST- PAID
	Any 6	\$7.25	
	Any 12 - \$12.95		

1. Grenoble	Bright Red	8. Mrs. E. P. Thom, Clear Yellow
2. Pink Radiance	Pink	9. President Herbert Hoover Deep Rose-Gold Center
3. Mrs. P. S. DuPont	Golden Yellow	10. Etoile De Hollande, Deep Red One of best Deep Reds
4. Christopher Stone ...	Deep Red	11. Picture Clear Pink with trace of Salmon One of Finest
5. Countess Vandal	Ivory Petals, Rosy Center	12. Condesa de Sastago Copper Red, inside; Yellow, outside One of great Roses of all times
6. Editor McFarland	Deep Pink Considered one of best Pink Roses	
7. Caledonia	Pure White	

Floribunda Roses FOR MASSES OF COLOR

Hardy, compact, disease-resistant. Produce clusters of large, showy blossoms very freely from June until frost. Adaptable for planting anywhere around the home - as hedges, driveway borders or in foreground plantings with evergreens, shrubs or perennials.

12 FOR \$12.95 3 for \$3.85
6 for \$7.25

SHIPPED POSTPAID

IMPROVED LAFAYETTE - Red

Semi-double, 27-inch tall, abundant bloomer. Cherry red suffused with vivid crimson. Blooms profusely. One of the finest Roses for bedding, flowering without fail until hard frost.

ELSE POULSEN - Pink

Color, bright, lasting rose-pink. Great clusters of medium to large semi-double, open flowers are borne on long cutting stems. Mild but delightful fragrance. An erect, thrifty bush that is ideal to use in combination with flowering shrubs in foundation and border planting. Grows to a height of approximately 3 to 4 feet.

GOLDEN SALMON - Yellow

Blooms in dazzling orange-salmon. A Rose that you will love more and more as you observe its masses of blooms in your own garden next season. Very tough and easy to grow. Four or five plants in a group make an amazing display even in large gardens.

Musser Climbing Roses



Heavy Flowering

3 FOR \$3.85

6 for \$7.25

POSTPAID

Paul's Scarlet Climber-Red

Mid-season. Vivid scarlet and marvelously attractive, with a great mass of bloom. The colorful show keeps up for weeks. Brilliant color does not fade. Blooms in June, in great clusters all over the plant.

New Dawn - Pink

Long stems, fine for cutting. Perfect Hybrid-Tea-like blooms all season of Apple-blossom-pink, and a delicate appealing old rose fragrance. Long stems for bouquets, etc.

Golden Climber - Golden

Climbing form of the beautiful Tea Rose "Golden Charm." We recommend this to those of you who want a golden yellow climber to complete your color range. Vigorous grower and blooms resemble those of Hybrid Tea. Cut in bud, blooms will open. Buds deep yellow, open into lighter yellow. Fragrant.

Climbing Snowbird-White

A small to medium sized climbing Rose, but one that is a real asset to any Rose garden. Almost never is it without exquisite, long, flaring, WHITE buds and snowy, many-petaled, high-centered flowers. Will outbloom other white roses 2 to 1.

1952 All-America Rose Winners

See Page 5 for These 3 Outstanding New Roses

Musser Quality

BLUEBERRIES

Bearing Age Shrubs Produce Fruit Next Year

Musser Quality Blueberries are the most popular for Home Garden growing. The singularly attractive bushes (see photo at left) add beauty to any landscape, winter or summer. An excellent plant for garden boundaries, or planted in clumps. Our selection of 3 choice varieties insures proper cross-pollination, resulting in large crops.

The large, delicious berries are a treat for all the family — and six bushes will supply many more than your own requirements. And, with Blueberries of this high quality retailing at from 35 to 75 cents a pint, the heavily bearing bushes can be a source of considerable profit.

Any type of acid soil, which is reasonably moist, but is well-drained, will favor the finest development of these shrubs. If your soil is sweet, it can be readily conditioned by thoroughly mixing peat moss, partially rotted leaves, pine needles, or rotted sawdust with the soil before planting. Complete planting instructions are sent with each shipment.

We are offering two (2) each of the strongest bearing varieties; you are assured of a continuous crop throughout the summer. Bearing-age plants will produce fruit next year.



This Fine Musser Blueberry Shrub, two years out of the Nursery, is heavy with a profitable yield. Note decorative natural shape of this average specimen.

Grow Blueberries for Pleasure and Profit!

Here are Your BEST BUYS!

SPECIAL No. 12

6 — 2-year Blueberry Shrubs 9 to 12 inches	\$ 6.95
200 Strawberry Plants 50 each of four varieties	6.95
50 Asparagus Roots	4.50
Total Value	\$18.40

Postpaid for — \$15.95

SPECIAL No. 12-A

6 — 3-year BEARING AGE Blueberry Shrubs, 18 to 24 inches	\$10.50
200 Strawberry Plants 50 each of four varieties	6.95
50 Asparagus Roots	4.50
Total Value	\$21.95

Postpaid for — \$18.95

SPECIAL No. 10

Healthy, vigorous Musser Quality Blueberries,
9 to 12 inches

6 2-Year Plants **Sent POSTPAID \$6.95**

BEARING AGE SPECIAL No. 11

Blueberries, same as above, but large — 18 to 24 inches — 3-year stock, which is bearing age. These plants will begin producing fruit the following year.

6 Bearing Age Blueberries **Sent POSTPAID \$10.50**

Compare BLUEBERRIES

Only Quality Plants are the Big Producers

Cultivated Blueberries (shown left) and Wild Blueberries (right) are here compared in their ACTUAL SIZE. The careful culture of Musser Quality Blueberries has brought about this startling improvement. No one can resist the delicious flavor of Cultivated Blueberries. **GET STARTED IN 1952.**



Actual Size of
Giant Musser Cultivated Blueberries



Actual Size of
Wild Blueberries

Strawberries

All items on this page shipped postpaid.

Strawberries can be grown in practically every section of the country. They have a place in every garden. Our assortment of four (4) varieties has been selected from the strongest, disease-resistant strains, and will produce an abundance of large, succulent berries, during the whole summer under average conditions. You will have a full crop next spring and summer from these plants.

This is an ideal, balanced collection, and enough to plant 12, 25-foot rows. Complete planting instructions sent.

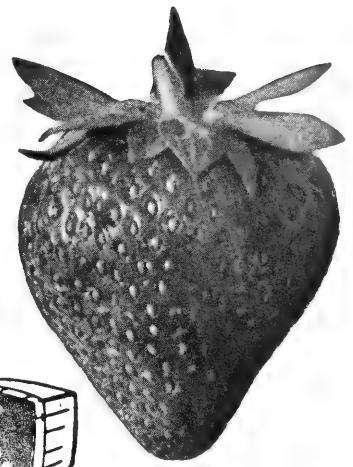
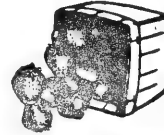
* If late variety is preferred instead of everbearing, specify on order.

100 Early (2 varieties)
 50 Mid-Season
 50 *Everbearing

50 Early (2 varieties)
 25 Mid-Season
 25 *Everbearing

200 STRAWBERRY PLANTS \$ **6.95** Post-paid

100 STRAWBERRY PLANTS \$ **3.95** Post-paid



Raspberries

Hardy Northern Stock
 Best Varieties

Your own plantings of Raspberries will bring that dainty, "fresh-off-the-vine" quality right to your table. A big money crop for local marketing. All Raspberry Prices are POSTPAID.



"Um-m Good!"



12 25 50 100

\ LATHAM, 1 Yr., No. 1 Most Popular and Widely Planted Red Raspberry	}				
		3.50	5.50	9.50	16.25
\ NEWBURGH, 1 Yr., No. 1 Finest Red Variety for Planting with Black Varieties	}				
3.25		4.75	8.25	14.50	
\ INDIAN SUMMER, 1 Yr., No. 1 Acknowledged the Best Red Everbearer	}				
2.95		4.50	7.75	13.50	
\ SODUS, 1 Yr., No. 1 The Best Purple Raspberry	}				
3.25		4.75	8.25	14.50	
\ CUMBERLAND, 1 Yr., No. 1 Old Favorite Black	}				
2.95		4.50	7.75	13.50	
\ MORRISON, 1 Yr., No. 1 Best New Black	}				
3.25		4.75	8.25	14.50	

Blackberries

PLANT ALONG THE FENCE LINE
 OR IN THAT EXTRA CORNER

Blackberries ripen in July to fill an important part in keeping a continuous supply of garden fresh fruit on the table.

No. 1 Plants — POSTPAID

12 Plants	25 Plants	100 Plants
3.20	5.20	13.70



Asparagus

You May Reap Profits for 20 Years!

We are particularly proud of the fine 2-yr. selected Musser Delicious Asparagus Roots offered here. Based on the rust-proof Mary Washington strain, our plants will produce stalks big enough for cutting the first year after planting. Distinguished by extra heavy crowns, long, fat roots, and a clear green color; rust-resistant and very strong grower.

50 Strong 2-Yr. Roots, \$4.50

Not less than 50 sold. Shipped postpaid.
 See also Specials 12-12A on preceding page

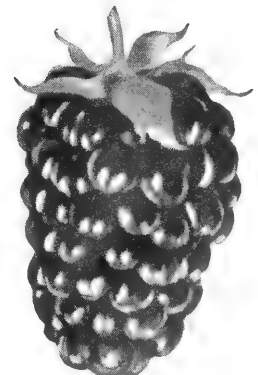
Boysenberries

HIGH QUALITY
 THORNLESS

An unusually large yielder, berries hold up well for local market. Practically seedless, juicy, delicious — be sure to include some Boysenberries in your fruit garden.

Hardy 1-Yr. Plants — POSTPAID

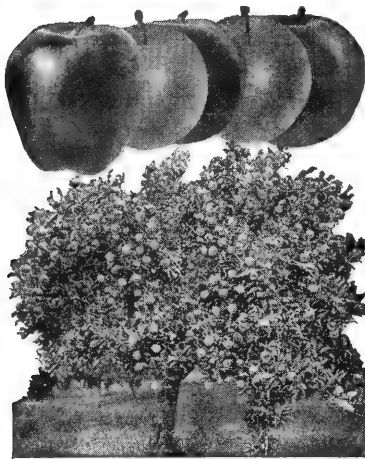
12 Plants	25 Plants	100 Plants
5.45	9.20	28.75



BEAUTY
In Spring

FRUIT TREES

HARVEST
In Fall



5-in-1 Apple Tree

(5 varieties grafted on one tree)

For Limited Space — Yellow Delicious, Red Rome Beauty, Red McIntosh, Lodi, Cortland. Plant several of these novel trees for beauty, shade, and for fruit maturing over a long period.

4 - 6 feet, Well Branched

Each

Postpaid, ONLY **3.25**



Standard Cherry Trees

4 - 6 FEET

Sour Cherry

LARGE MONTMORENCY — Good bearers. Bright clear red, good sized, fine flavor. Eat right off the tree; makes excellent pies and other desserts. Ripens July 15.

Sweet Cherries

(Two or more Sweet Cherries must be planted for pollination)

BLACK TARTARIAN — Purplish black, juicy rich flavor.

NAPOLION — Yellow, flesh firm, flavor rich and sweet.

WINDSOR — Pinkish flesh, almost black skin, large, juicy, firm.

2-yr. 4-6 ft. 1-9 10-49
 Each Each
Postpaid **2.55 1.95**

No. C.O.D.'s. All stock on this page must be paid in full with order, and shipping charges will be prepaid.

Complete planting instructions with order acknowledgment

DWARF FRUIT TREES (3 to 4 feet)

Where space is limited plant these dwarf trees. They do not spread more than 10-15 ft. Most varieties start producing fruit first year after planting. Fruit is as large or larger than standard trees. PLANT 2 OR MORE VARIETIES FOR POLLINATION.

Dwarf Apple Trees 3-4 ft.....
Select, branched. Each Per 3 Per 10
Cortland, Red McIntosh, Double Red
Delicious, Yellow Delicious, North-
ern Spy. } **3.75 10.50 30.00**

Dwarf Pear Trees 3-4 ft.....
Bartlett, Clapp's Favorite, Duchess,
Seckel.

STANDARD APPLE TREES (5 to 6 Feet)

Your choice of those listed below. Plant two varieties for successful pollination **1.95 1.55 1.10**

WRITE FOR SPECIAL QUANTITY PRICES

Early McIntosh (Ripens August). Bright red early apple. The flesh is white, tender and juicy with fine flavor. Ideal dessert apple.

Staymen's Winesap — Comes into bearing young. A reliable cropper. Medium to large size fruit. Slightly striped, coloring to dull red. Tree moderately vigorous.

Yellow Delicious (Ripens Oct.-Mar.). Bright, golden yellow of excellent quality. Firm, crisp and very juicy. Finest yellow apple. Bears young and heavily.

Red McIntosh (Ripens October.) Very attractive red apple of highest quality. Tender, juicy, and refreshing. Hardy. Bears young and annually.

Cortland (Ripens Nov.-Feb.). Large red fruit similar to McIntosh. Very hardy and desirable as a cross pollinator.

Red Delicious (Ripens Dec.-Feb.) Large dark red apple with crisp fine-grained flesh. Excellent flavor.

STANDARD PEACH TREES (5 to 6 Feet)

All varieties, 5-6 ft. **1.95 1.55 1.10**

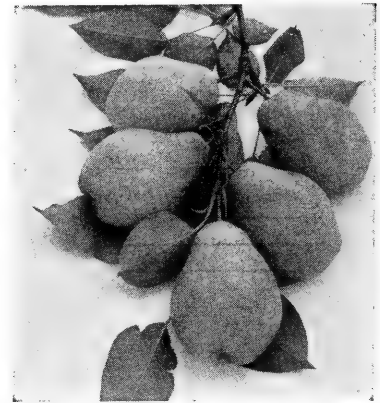
Golden Jubilee — We recommend this New Jersey Experiment Station introduction. Comparatively new, but widely planted. Is a real money maker. Quite hardy, resists excessive cold. Sure cropper, after severe winters and heavy frosts. Golden Jubilee is without equal as an early, large, yellow freestone of highest quality. Flesh is yellow, tender, juicy, and sweet. Ideal for home use and roadside market sale. (Ripens August 20-25.)

Hale Haven — MARVELOUS NEW Peach, a result of crossing the famous J. H. Hale with South Haven. A large, beautiful colored, yellow fleshed Peach. Ripens approximately 10 days to two weeks ahead of Elberta. Perfect freestone, strong grower. Good shipper, and a prolific, heavy bearer. The tree is hardy and fruit is of the highest quality. Has extremely high color which is present several days before the fruit ripens, thus allowing early picking for distant shipments. Should be included in every planting. (Ripens September 1-5)

Early Elberta — An excellent, new variety, resembling Elberta very closely, except a little rounder in shape and about 10 days earlier in ripening. Freestone. (Ripens September 6-10.)

Red Haven — NEW, desirable, early Peach that has been thoroughly tested and found highly satisfactory. Introduced by the South Haven Experimental Station, it has fine flavor of the South Haven and Hale-Haven. When other peaches are still green, this Peach is a bright red and ready for real profit. Hardy, freestone. Self-pollinizing and a prolific yielder. (Ripens August 20-25.)

Where Prepaid and Express Collect items are shipped together, entire shipment will be Express Collect.



Standard Pear Trees (4 to 5 feet)

THREE varieties needed for pollination

1 Each of Three Best Varieties:
Bartlett, Clapp's Favorite, Seckel

5.75 for all 3, postpaid.

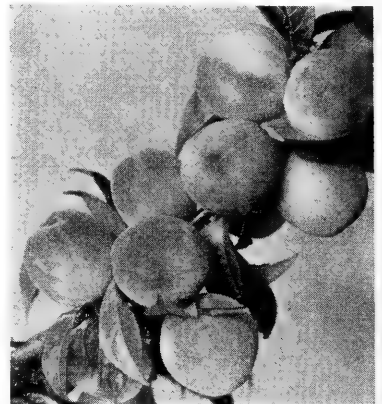
Each, \$1.95 10 to 49, \$1.50 Each

Bartlett — There's hardly a person that doesn't know the Bartlett Pear and its qualities, as it is grown and is adaptable to all different climates, soils and situations. Fruit is large, golden yellow in color, with a reddish blush on the sunny side. Flesh is tender and juicy, with a delicious, musky aroma. Trees are vigorous, attain large size, bear young, live long, and barring frosts and freezes, they bear full crops year after year. Justly the leading commercial Pear — a leader among canning Pears. (Ripens September-October.)

Clapp's Favorite — Precedes Bartlett, which it resembles in size, shape, color and flavor. In sections where Pears are grown for the market, it is the first Pear to be put on the market. Large pale lemon yellow fruit with brown dots. Fine texture, juicy, buttery, with a rich, sweet delicate vinous flavor. Tree hardy and productive. Thrives where other varieties fail. (Ripens August 15-20.)

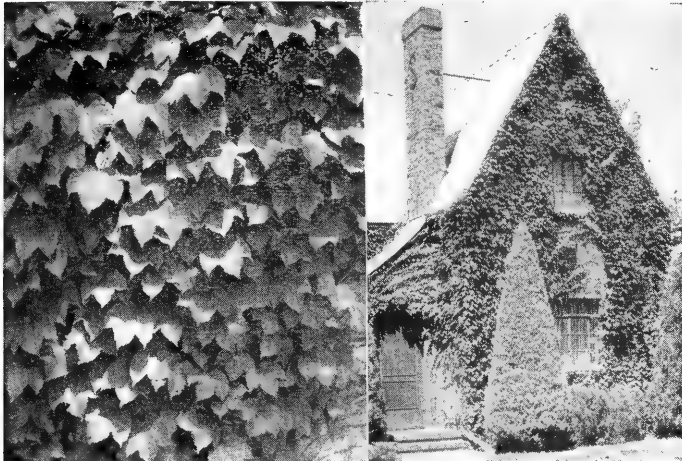
Seckel — The Pear to plant for eating fresh and pickling. Medium size, skin rich yellowish brown with deep, brownish red cheek when fully ripe. Flesh very fine grained, juicy, sweet, and good. Trees resistant to blight, very productive and hardy. Should be planted in fertile soils, not heavy clay. (Ripens September-October.)

Standard Peach Trees



GROUND COVERS -- VINES

All items on this page, payment in full with order.
Shipping charges collect.

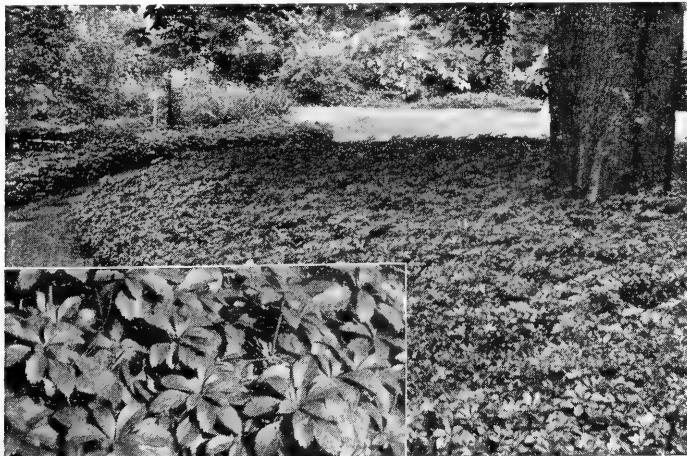


ENGLISH IVY — One of the very best EVERGREEN CLIMBING VINES and GROUND COVERS. Popular close clinging vine. Rich, dark green, glossy, three-lobed leaves make dense covering especially on brick or stone walls. Thrives in any good soil and under smokey city conditions. Is evergreen the year 'round. For walls, fences, etc. Especially desirable beneath shrubbery.

"For that Stubborn Spot, Beautify with a Ground Cover"



HALL'S HONEYSUCKLE — White and gold trumpet flowers are very fragrant and remain during the entire summer. Attracts bees and humming birds. The foliage remains green in winter with some protection. Excellent cover for steep banks. Will climb on trellis or tree. Fruit is yellow; very showy in winter against green leaves. Often grows to a length of 10 to 15 feet.



ENGLISH IVY (Evergreen Ivy)
Vine and Ground Cover

	Per 100	Per 1000
See photo and description at left.		
Rooted Cuttings 50 at 100 rate. 6-8"	15.00	70.00
3-yr. Transplants Lots of 10 at 100 rate.	50.00

Individual plants grown in 4 inch pots. Mass of roots — sheared back 2 to 5 runners. Plants shipped with earth and peat moss, individually paper wrapped.

PACHYSANDRA TERMINALIS (Spurge)
Evergreen Ground Cover

	Per 100	Per 1000
See description below. Lots of 50 at 100 rate.		
1-Yr. Plants 2-4"	9.00	80.00

MYRTLE (Vinca Minor, Periwinkle)
Evergreen Ground Cover

One of the best ground covers, small shiny evergreen leaves, and violet-blue flowers in spring. Thrives in shade. Especially valuable for planting under trees or in other shaded spots where grass will not grow. Plant 1 foot apart. Lots of 50 at 100 rate.

Medium, Lining Out Grade	8.00	35.00
---------------------------------------	-------------	--------------

HALL'S HONEYSUCKLE (Creeper or Climber)
(Lonicera Japonica Halliana)

See photo and description at left. 50 at 100 rate.		
Medium, Lining Out Grade	5.00	25.00
2-Yr. Transplants, No. 1 Grade ..	20.00	130.00

BITTERSWEET (Celastrus Scandens)

Deciduous climber or ground cover. Showy clusters of orange-red berries for winter bouquets. Sun or shade, in any soil. Attracts birds. 50 at 100 rate.

Branched, 12-18 in.	15.00	70.00
----------------------------------	--------------	--------------

VIRGINIA CREEPER, Vine and Ground Cover
(Ampelopsis Quinquefolia)

A splendid ground cover, especially on sandy soils where no other vegetation will grow. Unsurpassed in beauty by any other vine in autumn when the leaves turn to the most vivid tones of crimson, scarlet and orange. Plant 3 feet apart. Lots of 50 at 100 rate.

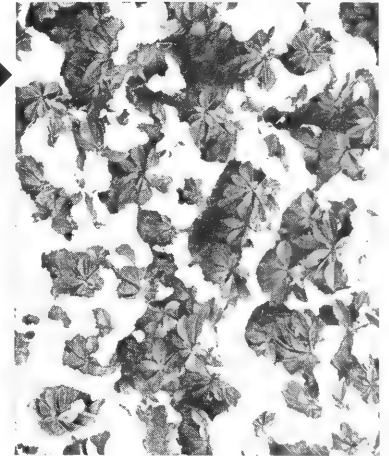
6-12 inches	16.00	80.00
2-Yr. No. 1 Plants	20.00	100.00

Plant Climbing Vines and Ground Cover.
1 to 1 1/2 feet apart.

PACHYSANDRA

Excellent in masses under heavy shade of trees. Under winter snow, retains fresh, soft green effect.

A dense, lustrous evergreen, trailing vine type of ground cover. It thrives under evergreens or anywhere. If planted 8 to 12 inches apart it will give a pleasing effect immediately and in two years' time will form a solid ground cover. Prefers shade; any soil; water liberally. It is **VERY HARDY**. Grows 6 to 8 inches tall. Fine for terraces or any place where grass is not successful.





WITHOUT . . . and . . . WITH
It DOES make a DIFFERENCE!

A Quick Start, Maximum Growth
with . . .

RA-PID-GRO

Miracle Plant Food

Analysis: 23% Nitrogen, 21% Phosphate, 17% Potash
and all essential minor elements.

USE FOR —

- EVERGREENS
- SHRUBS
- SHADE TREES
- ROSES

Also for Lawns, Perennials,
Vegetables, House Plants

POSTPAID to your DOOR

WHAT IS RA-PID-GRO?

Ra-Pid-Gro is a complete, concentrated plant food. It speeds up growth of plants now in place, and assures more successful transplanting of new plants.

HOW IS IT USED?

Just add water at the rate of 1 lb. of Ra-Pid-Gro to 22 gallons of water. It is ready to use as soon as it dissolves. For a small number of plants, mix at the rate of 1 teaspoonful to a quart of water.

WHAT WILL IT DO?

Ra-Pid-Gro works almost unbelievable miracles in promoting rapid and healthy growth on all types of plants. All the vital plant food elements are present in this remarkable discovery. Since it is applied in liquid form,

they are readily available to the roots of the plant.

HOW DOES COST COMPARE?

Ra-Pid-Gro is much less expensive. In the larger quantities it makes your fertilizer cost about ½ cent per lb. as against a cost of about 3 cents per lb. for average fertilizers. Remember, 1 pound of Ra-Pid-Gro makes 176 pounds of rich and complete plant food.

- 1 pound Ra-Pid-Gro (makes 22 gals.) \$ 1.25 postpaid
- 2 pounds Ra-Pid-Gro (makes 44 gals.) \$ 2.35 postpaid
- 5 lbs. Ra-Pid-Gro** makes 110 gals. **\$4.50 postpaid**
- 10 pounds Ra-Pid-Gro (makes 220 gals.) \$ 8.75 postpaid
- 25 pounds Ra-Pid-Gro (makes 550 gals.) \$21.00 postpaid

PLANT TREES

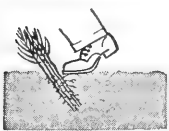
Carefully

WHEN TO PLANT FOREST TREES

Spring planting season is from March 15 to June 1. Fall planting is quite satisfactory when larger transplant stock is used, and when the site is fairly dry. Never attempt to plant in the fall on moist sites as the trees will be heaved out of the ground by the action of the frost on the soil. Fall planting season is September 1 to November 1, or before the ground freezes.

PREPARATIONS FOR PLANTING

It is not necessary to prepare the soil in any way before planting. Plowing before planting often allows too much settling after planting, leaving the trees lying upon the surface. Light sod and weeds on the planting site conserve moisture, and shade the young trees during the hot months of the first few seasons after planting. Do not use dry fertilizer before, during, or immediately after planting as the fresh fertilizer invariably burns the tender roots. A liquid fertilizer, "Ra-Pid-Gro," is a safe and efficient plant food which may be used to dip tree roots before planting. It may be poured into the hole with the tree ("puddled").

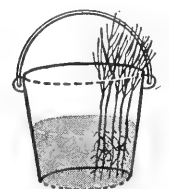


When your trees arrive UNPACK AT ONCE. This is very important. While trees are out of the ground they must be handled very carefully. Do not expose the roots to sunlight or drying winds, or the trees will be seriously injured or killed. Dig a

"Heeling In"

Open bundles and spread trees evenly in a V-shaped trench. Cover roots with loose moist soil; water well. Fill trench with soil; tamp firmly with feet.

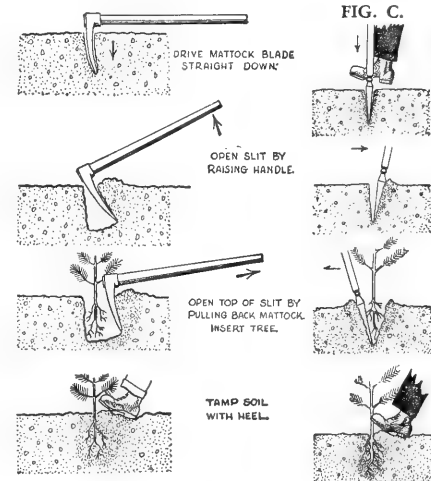
While planting CARRY TREES IN BUCKET, roots covered with thin mud. Remove one plant at a time as planting progresses.



trench (see drawing) deep enough to accommodate the roots and long enough to hold the trees. This trench should be near the planting site in a shaded location such as the north side of a building or in a woods, and accessible to water if possible. Your trees will come packed in crates or cartons, with the roots wrapped in moist moss and the tops dry. Remove all of this packing material and place the bundles of trees in the trench, packing LOOSE soil tightly around the roots so that air is excluded. "Ra-Pid-Gro" (see full description above), is a plant food quickly assimilated, helpful to trees while heeled in. In planting, buckets (see drawing) a solution of "Ra-Pid-Gro" to make the mud will feed the trees and help overcome the shock of replanting. This mud mixture will adhere to the roots, and while planting it will dry slightly on the surface, conserving necessary moisture in contact with the root itself.

HOW TO PLANT

A MATTOCK is the best tool for tree planting in soil containing rock or shale or that is exceptionally hard to work. Open a hole deep enough to accommodate the roots, and large enough to allow for spreading out the roots. Next take a tree from the bucket and place it in the hole so that when the hole is closed the tree will stand as deep or preferably ½ to ¾ inches deeper than it was in the nursery. Spread out the roots as much as possible, never curl them up in a ball. Then close the hole completely, forcing soil tight against roots with



heel, which will leave a slight depression to catch rain water. Careful spreading of roots, and tight packing of good soil around the roots will insure success with planting. (See Figure A.)

Faster planting than with mattock can be accomplished with a SPADE illustrated on this page (Figures B and C) PROVIDED soil is relatively free of stones.

TREE PLANTING MACHINES are available and are satisfactory where planting is quite extensive and soil is easily worked.

CREW ORGANIZATION

Planting small tracts three men work together. One man goes ahead and digs the holes, the other two follow with buckets of trees and plant them in the holes. In planting more extensive tracts ten men will work to the best advantage. Three men go ahead in a parallel line digging the holes. Two planters follow each digging setting the trees. The tenth man follows the crew with two buckets of trees and replenishes the planters' buckets as necessary; also to observe that no more than one tree is planted in each hole, to watch spacing, to see that trees are planted properly, and to keep the crew going as rapidly as possible.

ONE MAN CAN PLANT AN
AVERAGE OF 1,000 TREES PER DAY

SPACING

Where thinning is to be done at a comparatively young age (4 to 5 years) as with a Christmas Tree and/or ornamental plantation, spacing is usually 3 by 3 feet for Spruce or 5 by 5 feet for Pines. With a forest plantation where no thinning is intended for 20 to 25 years, 6 by 6 feet or 8 by 8 feet is recommended.

Specially Designed
EXTRA Heavy
TREE PLANTING
TOOL



FIG. B

Shipped Postpaid
within 600 miles
Each \$8.95

Number of Trees Required Per Acre

for different spacings	
3 x 3 feet	4,840
4 x 4 feet	2,722
5 x 5 feet	1,742
6 x 6 feet	1,210

Musser's Christmas Tree Growers' Guide

A Cash Crop from Idle Land

- ✓ Over 50,000,000 Christmas Trees are used each year.
- ✓ Natural sources rapidly decreasing; quality more inferior.
- ✓ Planted Quality Trees ALWAYS command premium prices.
- ✓ Wholesale price in recent years, \$1.25 to \$1.50 per tree.



Planted Trees Are Preferred



The custom of using Christmas Trees started a great many years ago and we know it will continue in both good and bad times. The business of growing Christmas Trees is still in its infancy.

Pines were the original Christmas trees. Spruce and Fir then came into favor, but **Planted Pines** are now rapidly replacing Spruce and Fir. All Pines are much faster growing than Spruce. All Pines retain their long needles and fresh appearance for months after being cut, whereas the short needle wild trees which are commonly shipped in, begin to shed within a day or two after being decorated.

Many Species Can Be Planted

The most desirable species to plant depends upon several factors. First, is the quality of the soil; second, is the local demand for a certain species of tree; and third, is economy of production.

★ **PINES** including all the **long needled** varieties of Christmas Trees, the the most economical to produce, because:

- (1) Their hardiness enables them to thrive on hilly, stony, poor land unsuited for other agricultural purposes; sun-leached southern and eastern slopes prove very successful.
- (2) They flourish in practically all climates.
- (3) Most varieties will tolerate low moisture.
- (4) Their growth is more rapid than that of any other Christmas Tree species, allowing them to be marketed within 5 to 8 years after planting.
- (5) They require no cultivation.

WHY PLANTED PINES ARE BECOMING MORE POPULAR EACH YEAR:

- (1) All pines hold their needles for several months after being cut.
- (2) If seedlings grown from the best strains

of seed are used, beautiful, compact, premium trees are produced.

- (3) Pine trees always present a fresh appearance and give a pleasant fragrance.
- (4) Due to the heavier branches, this type of tree is especially easy to decorate.

Red, Scotch, Austrian and White Pine are the species most often planted for Christmas Trees and always command the highest prices. While they require no cultivation, it has been found that when planted in particularly good soil, they will grow too fast and should be pruned or sheared. This is a simple and very inexpensive procedure which is explained later.

★ **SPRUCES** are characterized by short, shiny needles, and, when properly spaced, develop thick foliage and heavy branches. Wild spruce grow too close together and do not receive sufficient sunlight; they are often spindly, open and one-sided. Bushy, symmetrical, quality Planted Spruce will always be very much in demand as living and cut Christmas Trees as well as for ornamental use. They command premium prices.

Norway and White Spruce are the varieties usually preferred for Christmas Tree planting, although **Blue Spruce**, while slower growing, is unsurpassed for beauty.

Spruce will grow in all temperate climates. It requires rich, moist soil and normal drainage. It can be grown successfully in partial shade or full sunlight. The species are slower growing than the Pines, requiring 7 to 10 years to reach marketable size. Northern and eastern exposures are preferred.

Due to the fact that the needles begin to shed within a few weeks after cutting, **Spruce** cannot be harvested for Christmas Trees too early. It is easily bundled, and does not require pruning, except following seasons of unusual growth. All varieties may be used for Christmas Trees.

★ **FIRS** are short needled and somewhat similar to the Spruces in appearance, although they may be distinguished by their flat needles and upright cones. They prefer moist soil which is kept cool by shading from the sun. **Douglas** and **Balsam** have been used as Christmas Trees for years. **Balsam** is particularly favored for its delightful fragrance. The facts related above as to the handling of Spruce apply to **Firs**, except that **Firs** should be planted in the extreme northern states **only**.



AMERICAN RED PINE

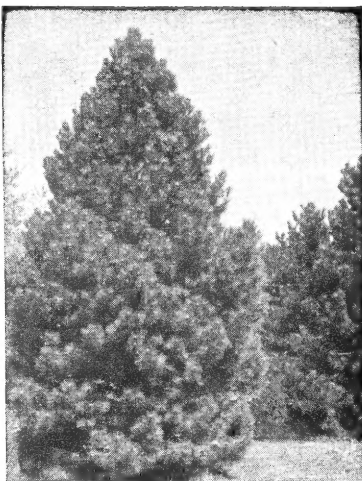
Fred Musser, developer of the proven Musser Culture for Tree Seedlings and Transplants, examines a fine specimen of American Red Pine on one of the Musser Christmas Tree Experimental Farms.

*"For Christmas
Trees — It
Always Pays
to Plant the Best —
MUSSEY TREES"*



WHITE PINE

One of the most popular Christmas trees, having all the fine characteristics for this use. Has ornamental value, with soft light-green to bluish-green foliage. Finest Timber.



SCOTCH PINE

Rapid growing; light gray-green foliage. Will grow in poor soil and under adverse conditions. This species, used extensively for Christmas trees — also for windbreaks, etc.



NORWAY SPRUCE

Norway Spruce has short, shiny, dark green needles, thick foliage, and strong branches. It is one of the most widely used as an Ornamental. A premium Christmas Tree.



BLUE SPRUCE

One of the finest of Christmas trees. It is sturdy and compact in form, ranging in color from slightly blue-green to marvelous blue. It thrives in moist rich soil; prefers sunlight.

Natural sources of Christmas Trees are rapidly decreasing and becoming more inferior in quality.

Plant a Variety of Species

Plant 70% Pines, and 30% Spruces or Firs. A mixture of species in the same plantation is the most desirable method of planting. With a variety of species to offer, you will undoubtedly make additional sales. Also different species have different rates of growth, making it possible to harvest more crops from the same plantation.

You may have several varieties of both species, depending on your particular soil and climate conditions. Keep in mind that Pines do well in poor, dry, thin soil, with southern or western exposure. Spruces and Firs require moisture, but good drainage, need some organic matter in the soil and prefer the cool, protected northern and eastern slopes.



Your Farm Agent, State Forester, or Soil Conservation representative will be glad to assist you in selecting planting sites best suited to various types of trees.

Land Needs No Preparation

We recommend no preparation of soil before planting. The added expense is usually not justified, and often a light growth of grass and weeds is actually beneficial to the growth of young trees since they offer shade and moisture retention during the early stages of the plantation. If sod is heavy, a 12 inch area should be removed for each tree. If you intend to cultivate your trees after planting it will be necessary to plow the site first.

Space Trees Properly For Greater Profit

When growing trees are spaced too closely together, they crowd, and the resulting competition speeds up the height growth but tends to make the tree thin and thus poor Christmas Trees. The best shaped trees will be grown by spacing far enough apart that they do not interfere with each other. However, it is economical to speed up the growth somewhat, and it is advisable to utilize all the land. Through years of experimenting we have arrived at an average spacing of 4 to 5 feet for Spruce and 5 to 7 feet for Pines. Planting is done as with any forest trees. Directions appear on page 20 of this Planting List.

Pruning or Shearing Pays Well

Pruning or shearing is recommended for all varieties of Pine Christmas Trees. It develops a solid, extra heavy branched and bushy tree. This procedure will produce a premium tree that will command the very highest prices. Pruning is begun at about the fourth year, and before the new, tender growth starts to get tough and woody. It is usually done between June 1st and July 31st. Pruning is an easy thing to do. One man using long shears can prune at least 50 trees per hour. Trim off about

½ the new growth made during one season. Later in the season many new buds will form which will produce branches the following year. Shape the tree to a symmetrical form as indicated in diagram below. The additional market value may justify pruning two or three times before cutting. However, do not prune in the year the tree is to be harvested.

Except for pruning, no care or cultivation is necessary.

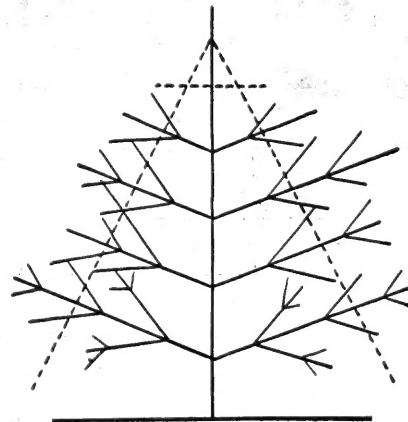
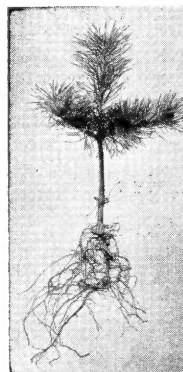


Diagram showing proper method of pruning or shearing for more beautiful Christmas tree. Prune to a cone shape, roughly as indicated by dotted line. Top should be trimmed shorter than would make a perfect cone, as thin main shoot has a tendency to grow much faster than the side branches. Cut no more than one-half new growth (about 12 inches) beginning at about the fourth year.

Wholesale price of Christmas Trees in recent years, \$1.25 to \$1.50 per tree.



Musser

Special Strain Scotch Pine

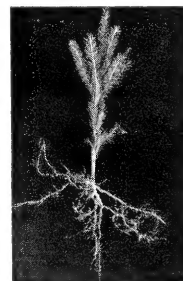
2-year SEEDLINGS

Grown from seed collected by us from selected parent trees — exceptionally healthy, sturdy, straight-stemmed specimens, with rich green color.

4 to 8 inches

Recommended size for planting in permanent location.

Per 1000 \$35.00



Musser

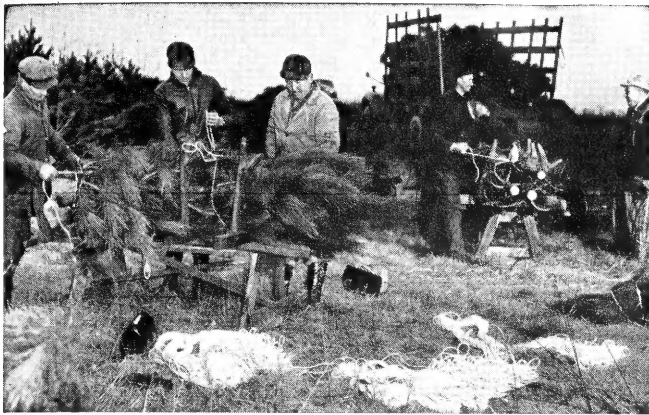
Norway Spruce

3-year SEEDLINGS

Nicely Branched
4 to 8 inches

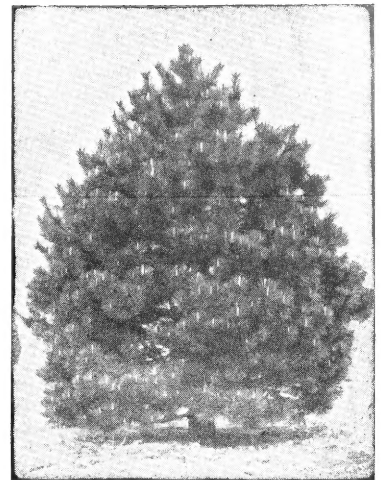
Per 1000 \$35.00

Over 50,000,000 Christmas Trees used each year



Baling Musser Christmas Trees for Distant Shipments

"Plant a variety of species. Then, after first harvest year, Christmas Trees may be cut over a period up to 10 years, without additional annual investment — a fine cash crop."



AUSTRIAN PINE

Stands out on account of its heavy, bushy form. An excellent tree for windbreaks, screens, and for single specimens. One of the most beautiful and sturdy Christmas trees.

Harvest Christmas Trees

The trees of a Christmas Tree plantation do not all arrive at marketable size the same year. As soon as some are of suitable size they should be cut and marketed. The following year more will be ready. Where much land is available it is a good plan to combine reforestation with the Christmas Tree cutting. Under this system you will plant a new tract each year and as they become of age to harvest, cut only 50% of the trees leaving the remainder to grow into timber. The 50% used as Christmas Trees may be cut over a period of about ten years, more or less, depending upon variety of species planted, but in that time you will have several tracts to cut over. Where a site is particularly favorable, planting and harvesting may continue indefinitely.

Selling Your Tree Crop

Your particular marketing conditions will determine the manner in which you will handle your cutting operations. Some growers merely market their trees on the ground. The customer selects his tree, you cut it and he takes it home. Or you may sell trees on the stump to a dealer who comes in and cuts his trees. If you retail your trees on a lot or sell in small amounts to other dealers, cut trees may be transported loose on a truck or wagon. However, if you intend to rail ship or truck them long distances, they should be baled. This amounts to tying several trees together, and binding the branches down flat on the main stem. This allows many more trees to be loaded in the same space, and tends to protect them from damage and breakage while handling them. Many ingenious devices have been constructed for aiding in tree baling, but as yet none have been placed on the market. (See illustration at top of this page).

Marketing a Christmas Tree crop must be done within about six to eight weeks of the year. Conditions vary somewhat throughout the country, but usually you can expect a strong market for your product. You will no doubt have competition from "shipped in" wild trees, but experience has shown that **planted trees sell when others do not.** They also command a much better price throughout. The reason for this is obvious when you compare the quality of the two types of trees.



BLACK HILLS SPRUCE

Highly ornamental Spruce, with rich, dark green foliage. Grows with a dense, even, pyramidal form. Requires good rich, moist but well-drained soil, for proper growth.

Musser Colorado Blue Spruce

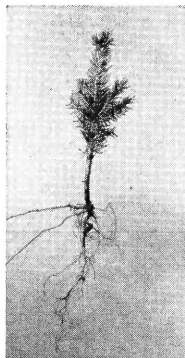
Special Strain
FAST GROWING

3-year SEEDLINGS

Note size - 5 to 10 in.

Very Superior Stock — For
Christmas Trees, Ornamentals

Per 1000 \$35.00



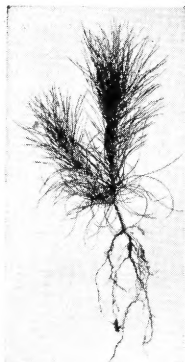
Musser American Red Pine

3-year SEEDLINGS

6 to 10 inches

Exceptionally Thrifty. Seed
selected by our men from
outstanding specimen trees.

Per 1000 \$45.00



Planted Musser Trees

1. Improve soil by retaining moisture, preventing erosion, and restoring fertility.
2. Bring idle agriculturally useless land into production profitably.
3. Make a \$1000 investment to plant a 50 acre tract worth \$15,000 for timber in about 30 years (\$10 per acre per year).
4. Bring cash profits by thinning Christmas trees from a forest plantation.
5. Have no restrictions as to selling for Christmas trees or lumber.
6. Are a cash crop requiring no cultivation or extra care.
7. Are always at the top of the Christmas tree market.



DOUGLAS FIR

A fairly long needle fir, grayish green in color. Highly ornamental. It will do well in open sunlight or partial shade, northern or eastern exposures. Popular Christmas Tree.

**Planted Quality Christmas Trees
ALWAYS command premium prices**

MUSSER FORESTS, INC.
Indiana, Pa.

RETURN POSTAGE GUARANTEED

Sec. 34.66 P. L. & R.
U. S. POSTAGE
PAID
INDIANA, PA.
Permit No 122

Ralph B. Shaw, Library,
U. S. Dept. of Agriculture
Washington 25, D. C.

Plant the Best...
Musser Trees



Potted BLUE SPRUCE

The King of Ornamentals

These selected, sturdy Blue Spruce Trees have been individually grown in 4-inch pots and are shipped with earth and peat moss. Each tree is separately paper wrapped. Extra heavy, well branched, bushy trees, from 6 to 8 inches tall.

Blue Spruce
for that
Accent of Beauty

10 FOR \$6.50

Shipped Express Collect

Musser's 1952 Special Offers

All are EXTRA Quality
Musser Cultured Plants
Shipped to you Postpaid

Special No. 1

Musser's Miniature EVERGREEN FOREST

3 and 5 yr. Select — Large, Healthy Trees

- 5 — Scotch Pine 8 to 14 inches
- 5 — Red Pine 6 to 10 inches
- 5 — Norway Spruce 10 to 16 inches
- 5 — Colorado Blue Spruce 6 to 10 inches
- 5 — Canadian Hemlock 8 to 14 inches

25 for \$5.00
POSTPAID



King of Ornamentals

Special No. 2

COLORADO

BLUE SPRUCE

6-Yr. Transplants

Excellent 8 to 14 inch Transplanted stock. Color, blue-green to marvelous blue. Compact, sturdy. Handsome specimens or hedge.

POST-PAID **5 FOR \$3.50**

Special No. 3

5 - Japanese Yew

Twice Trans.

Upright. Compact natural cone shape, deep rich green foliage. Hardy in sun or shade. 12-13 in.



Upright Yew

5 - Pfitzer Juniper

Bluish-green. Fast growing spreader; for sunny spots. Branched twice transplants, 8-15 in.



Pfitzer Juniper

10 for \$12.50
only POSTPAID

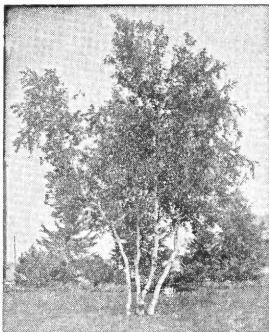
Special No. 4

White Birch

Twenty 16" to 24" Seedlings. Bark turns creamy-white after 3-4 years. Graceful clump by planting several together in each location. Hardy.

20-\$3.50

POSTPAID



ROSE Special No. 5 **50-\$5.50**

POSTPAID

(Rosa Multiflora) HEAVY 3 MM STOCK 10 to 18 INCHES. Dense, thorny fence. Prune to any height. Clusters of pinkish-white wild roses in June; bright red berries follow. Fast growing.

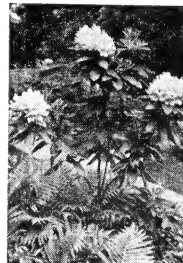


Special No. 6

RHODODENDRON

9 to 12 inch single stem to lightly branched. Fine young plants — will grow bushy.

Maximum — Excellent ornamental, large clusters of gorgeous flowers. Prefers partial shade.



Gives a "Woody" effect

10 FOR \$4.00

POST-PAID

All Special Offers are shipped Postpaid at proper planting time. Use enclosed Order Blank.

THE PARK PRESS - INDIANA, PENNSYLVANIA